

## General Equipment Info

**Year**

2017

**Make**

Deere

**Model**

470G LC

**Hours**

8,288

**Serial Number**

1FF470GXCGE471362

**Machine Options**

Cab, Heat, A/C, Quick Coupler, Cleanup Bucket

**Address**

East of Didsbury Highway 582 to Range Rd. 285

**City**

Didsbury

**Province/State**

AB

**Inspector Name**

AdamDow

**Date of Inspection**

03-12-2024

**Hour Meter - Idle Hours**

**Serial Number Plate**



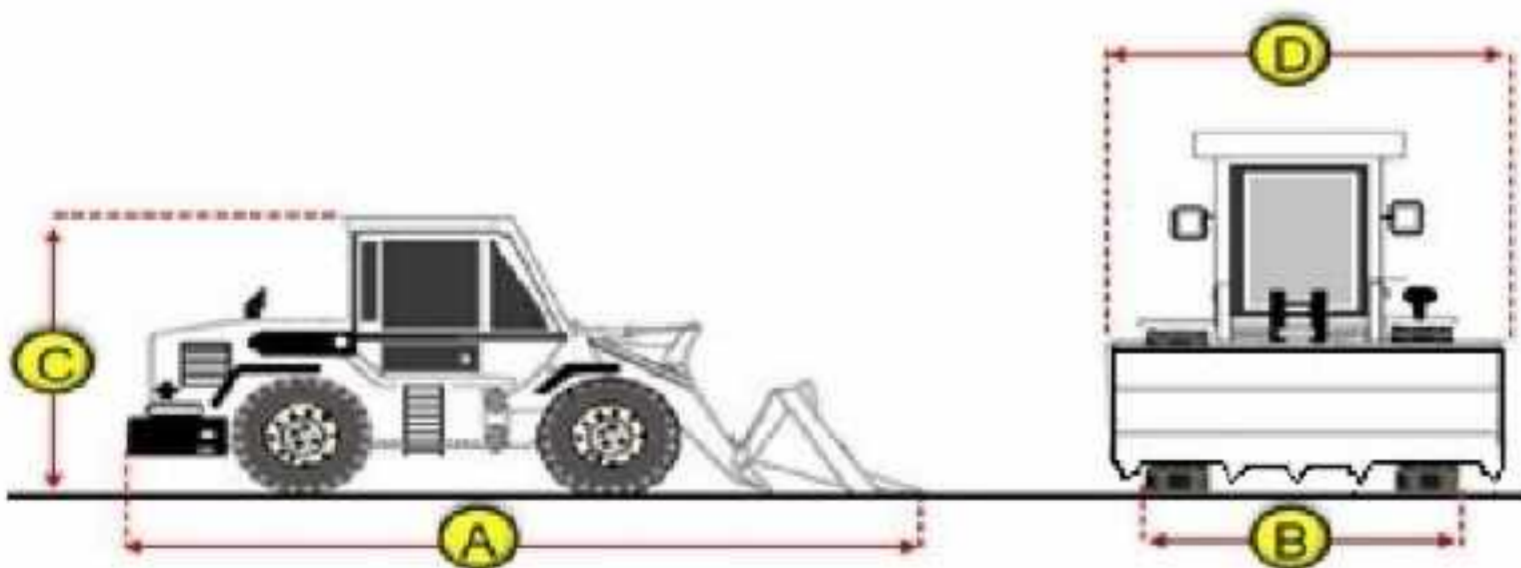
**Hour Meter - SMU Hours**





## Dimensions

### Measurement Guide



#### A. Length (ft and inches)

52'

#### B. Width (ft and inches)

11' 6"

#### C. Height (ft and inches)

12' 8"

#### D. Shipping Width (ft and inches)

#### Operational Weight (lbs)

## Exterior Condition

### Coupler Style

Wedge Lock

### Exterior Walkaround Photos



**Coupler Brand**

Wbm

**Coupler Width (Between bucket ears)**

23 3/8"

**Stick Width (Between bucket ears)**

**Pin Size**

**Center to Center of Bucket Pins**

**Excavator Boom Length**

16'

**Loader Bucket Pin Height**

**Width Between Bucket Ears**

**Top Pin Size**

**Bottom Pin Size**

**Center to Center of Coupler Pins**



**Coupler Photos**





**Hard Bar Photos**

**Close-up Exterior Photos**













**Chassis Photos**







## Undercarriage Condition

### Undercarriage Type

Tracks

### Tire Size

### Tire Brand

### Front Left Tire - Ratio Remaining

### Rear Left Tire - Ratio Remaining

### Front Right Tire - Ratio Remaining

### Rear Right Tire - Ratio Remaining

### Wheel and Tire Condition

### Left Track - Ratio Remaining

70%

### Right Track - Ratio Remaining

70%

### Track Condition

Good condition, wear consistent with hours

### Pad Width Instructions

Take photo of tape measure on pad/grousers

### Front Left Tire - Photos

### Rear Left Tire - Photos

### Front Right Tire - Photos

### Rear Right Tire - Photos

### Left Track - Photos





**Right Track - Photos**







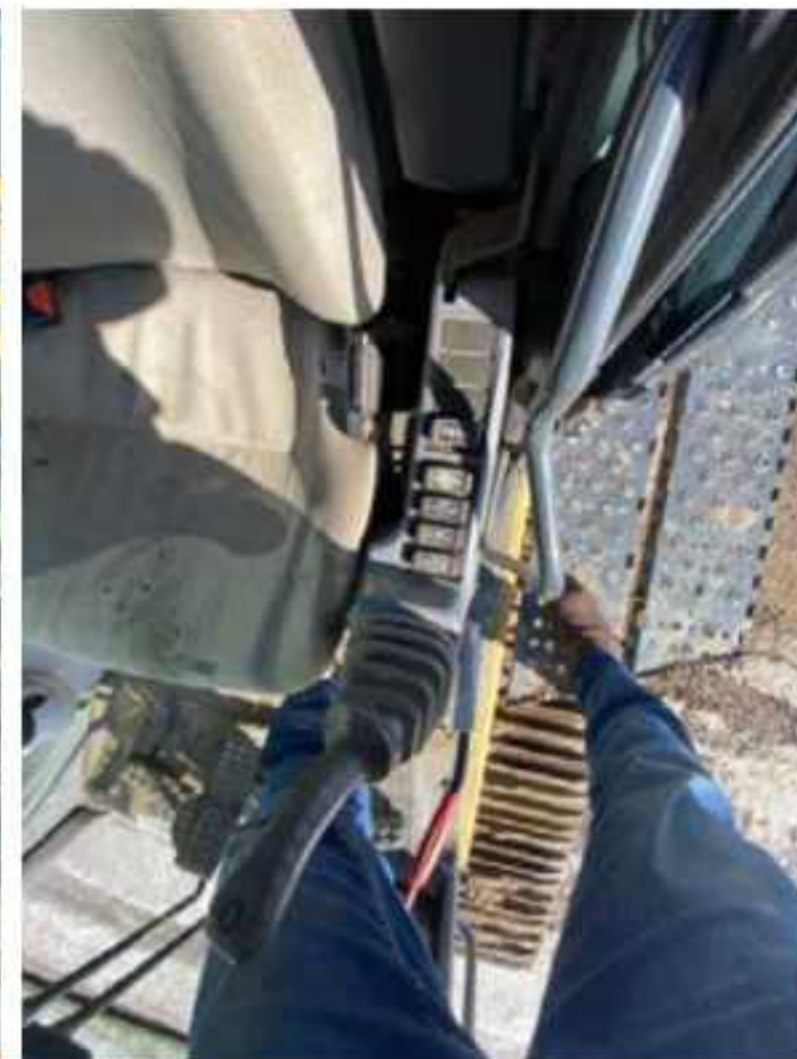
Pad Width Photo



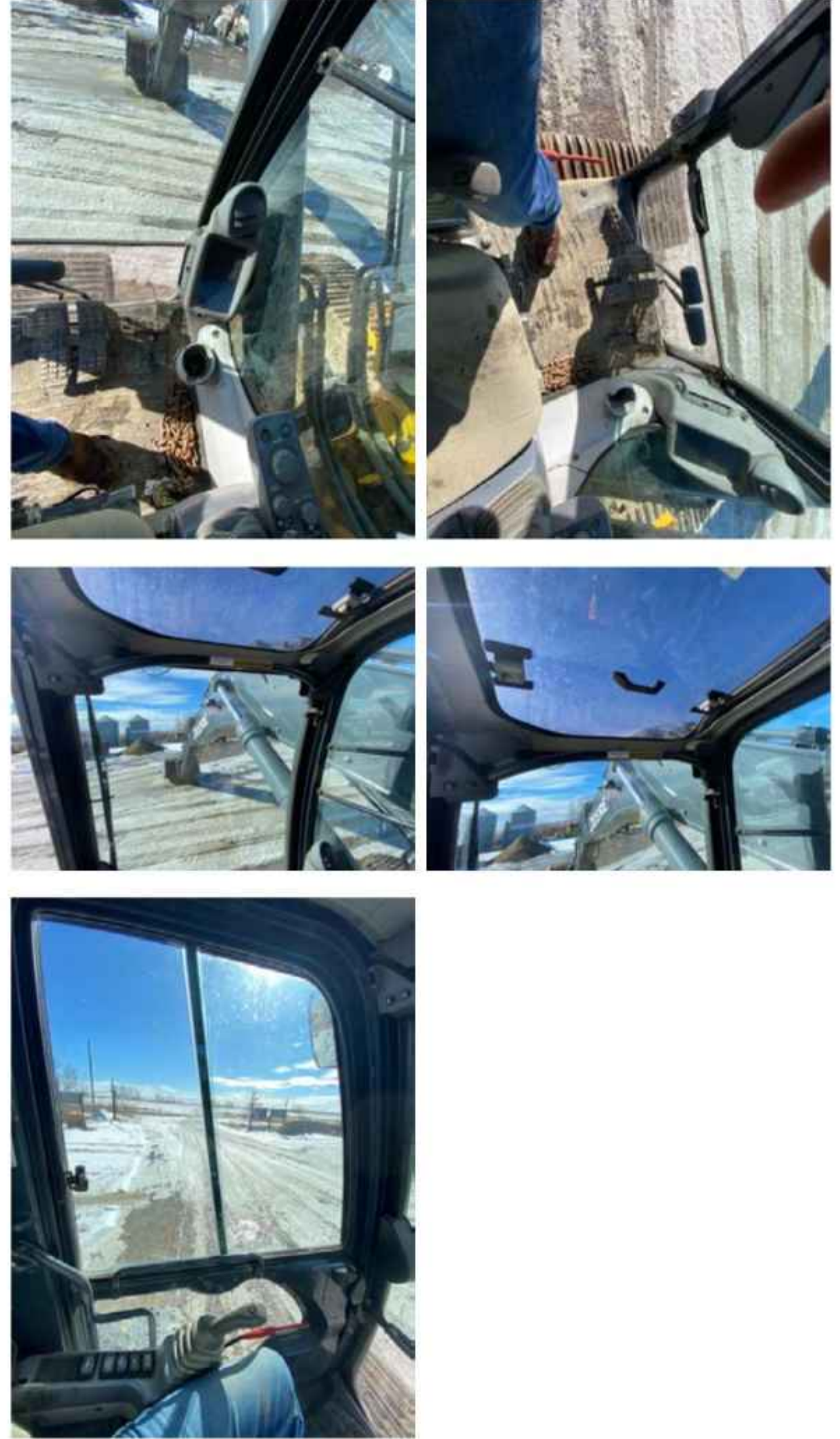
Interior Condition

Interior Condition









## Engine Condition

### Engine Info

Gather general engine information if available (i.e., Make, Model, Cylinders, type, Horsepower).

### Emissions Tier

### Engine Serial Number

### Unusual Noises (Upon Start-up, Idle, Shutdown)

No

### Engine Exhaust Color

### Engine Compartment Photos



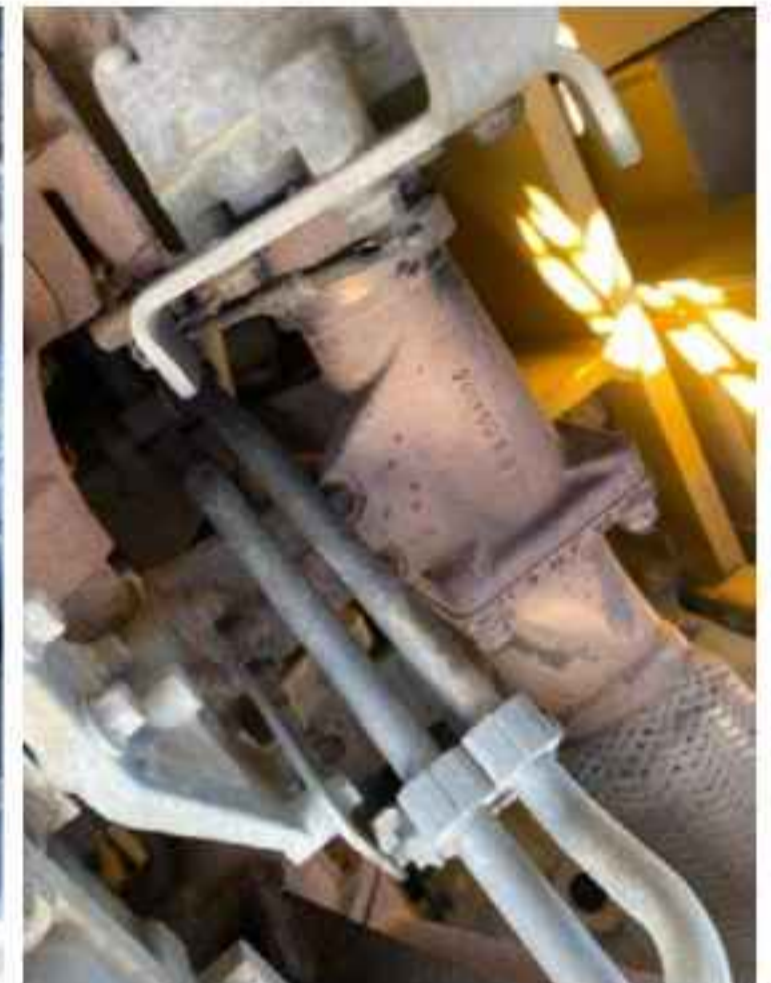
Clear  
**Engine Type (Make, Model, Cylinders, HP)**

**Blow-by (Visual Observation Check)**

No

**Engine Smoke (Upon Start-up, Idle, Shutdown)**

No



**Active Engine Codes**

**A/C Compressor**

**Engine Data Plate**





**EPA Label**

## Hydraulic System

### **Hydraulic Pumps / Motors Condition**

Hydraulic pumps & motors are dry and in good condition

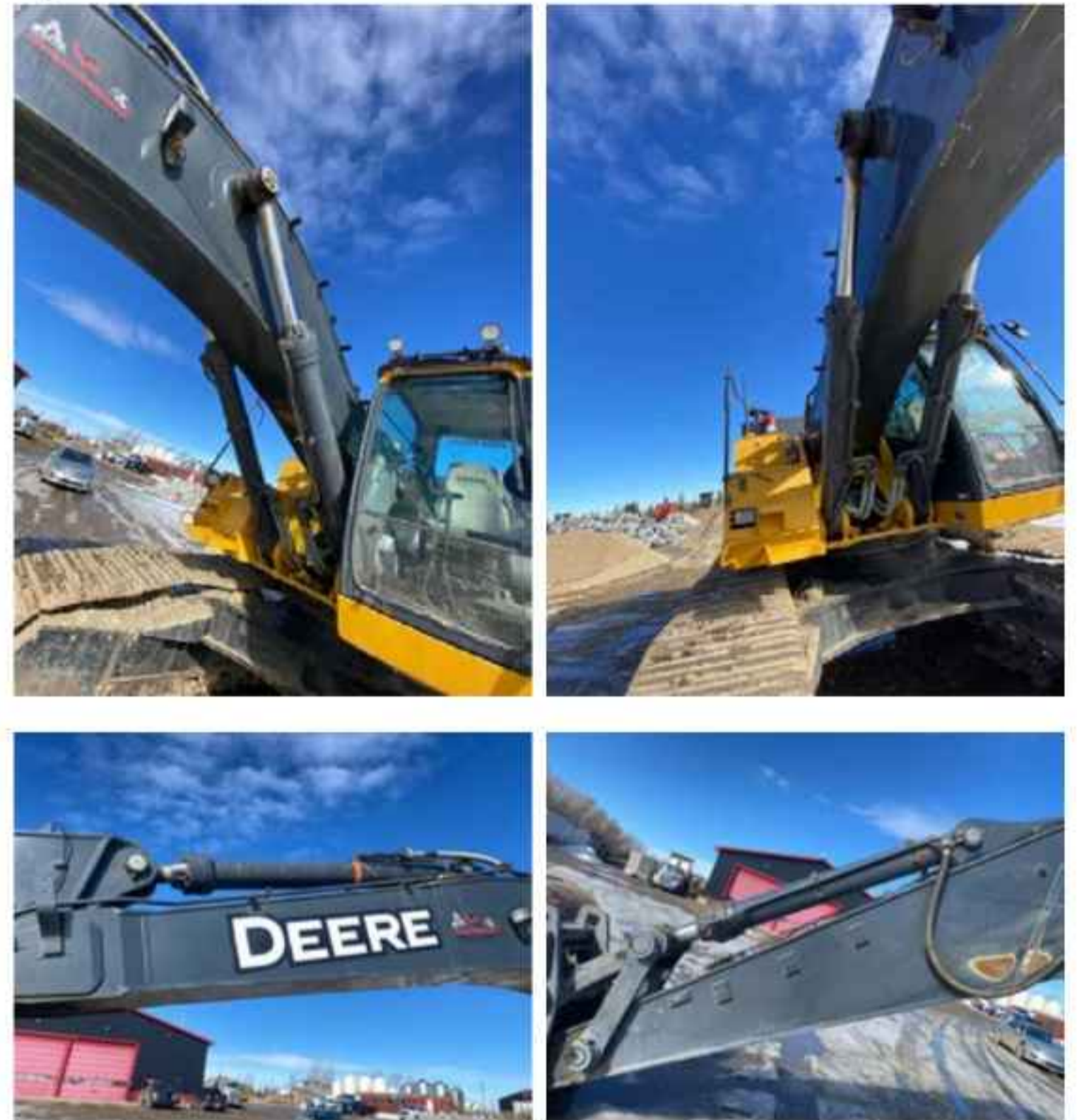
### **Hydraulic Lines/Fittings Condition**

Hydraulic Lines & Fittings are clean and in good condition

### **Hydraulic Cylinders Condition**

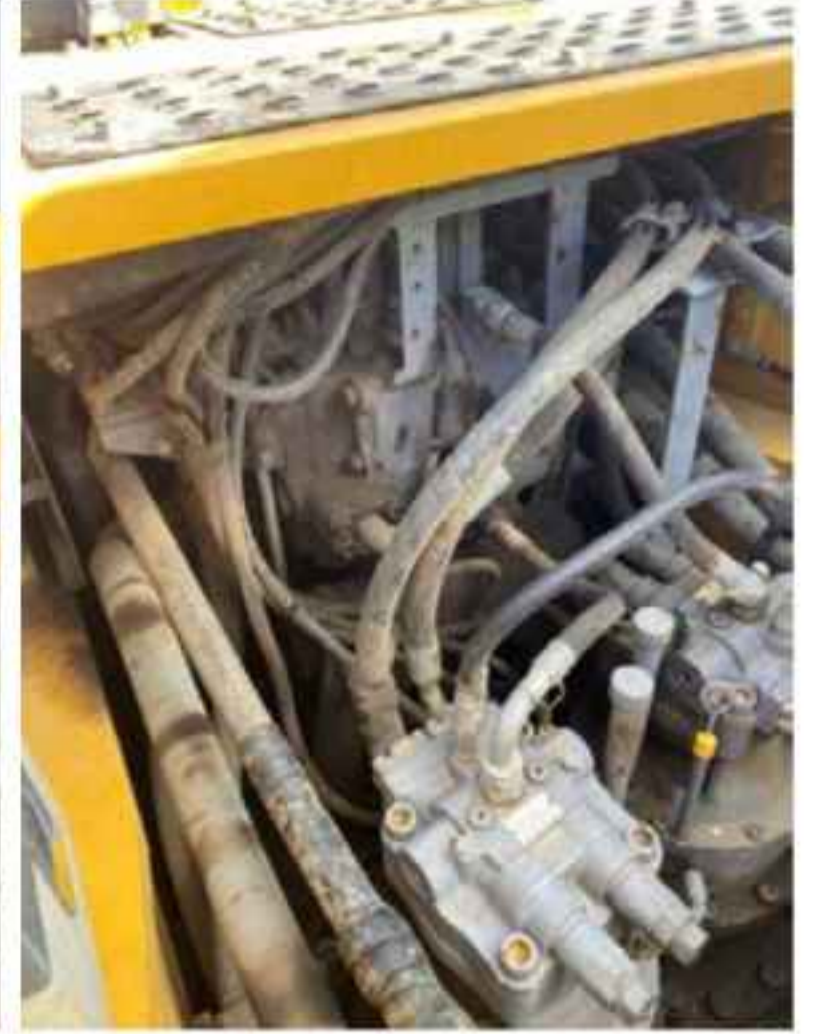
Hydraulic cylinders are clean and in good condition

### **Hydraulic Cylinder Photos**



**Hydraulic System Photos**









Hydraulic Leaks Photos

## Drivetrain

**Hydrostatic Transmission?**

Yes

**2 Speed?**

Yes

**Drive**

**Transmission Condition**

Good forward and reverse function

**Axle Condition**

No leaks, unusual noises or vibrations

**Parking Brake Function**

Strong, holds machine

**Drivetrain Photos**



## Function Check

**Hydraulic Operation**

N/A

**Service Brakes Operation**

N/A

**Electronics Operation**

N/A

**Forward / Reverse**

N/A

**Attachment Operation**

N/A

**Park Brake Operation**

N/A

## Attachments

**Attachment Type**

Cleanup bucket

**Attachment Make**

WBM

**Attachment Size / Specs**

77"

**Attachment Serial Number**

?

**Attachment Photos**



**Attachment Serial Number Photo**





**Attachment Width Photo**



