

## General Equipment Info

**Year**

**Make**

Volvo

**Model**

A250 4x4

**Hours**

779

**Serial Number**

5350V68157

**Machine Options**

Cab, Heat, 4WD

**Address**

**City**

Surrey

**Province/State**

BC

**Inspector Name**

Flori

**Date of Inspection**

01-16-2024

**Hour Meter - Idle Hours**

**Serial Number Plate**



**Hour Meter - SMU Hours**



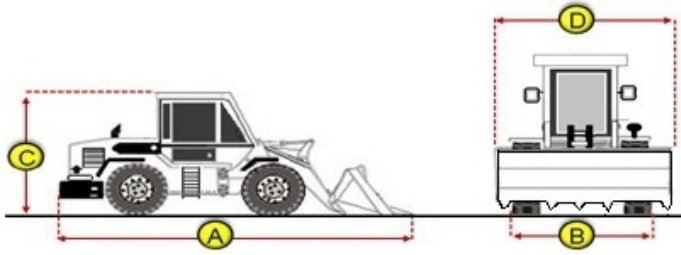
## Dimensions

**Measurement Guide**

**A. Length (ft and inches)**

33'

**B. Width (ft and inches)**



11'

**C. Height (ft and inches)**

12'3"

**D. Shipping Width (ft and inches)**

11'

**Operational Weight (lbs)**

## Exterior Condition

**Coupler Style**

**Coupler Brand**

**Coupler Width (Between bucket ears)**

**Stick Width (Between bucket ears)**

**Pin Size**

**Center to Center of Bucket Pins**

**Excavator Boom Length**

**Loader Bucket Pin Height**

**Width Between Bucket Ears**

**Top Pin Size**

**Bottom Pin Size**

**Center to Center of Coupler Pins**

## Exterior Walkaround Photos



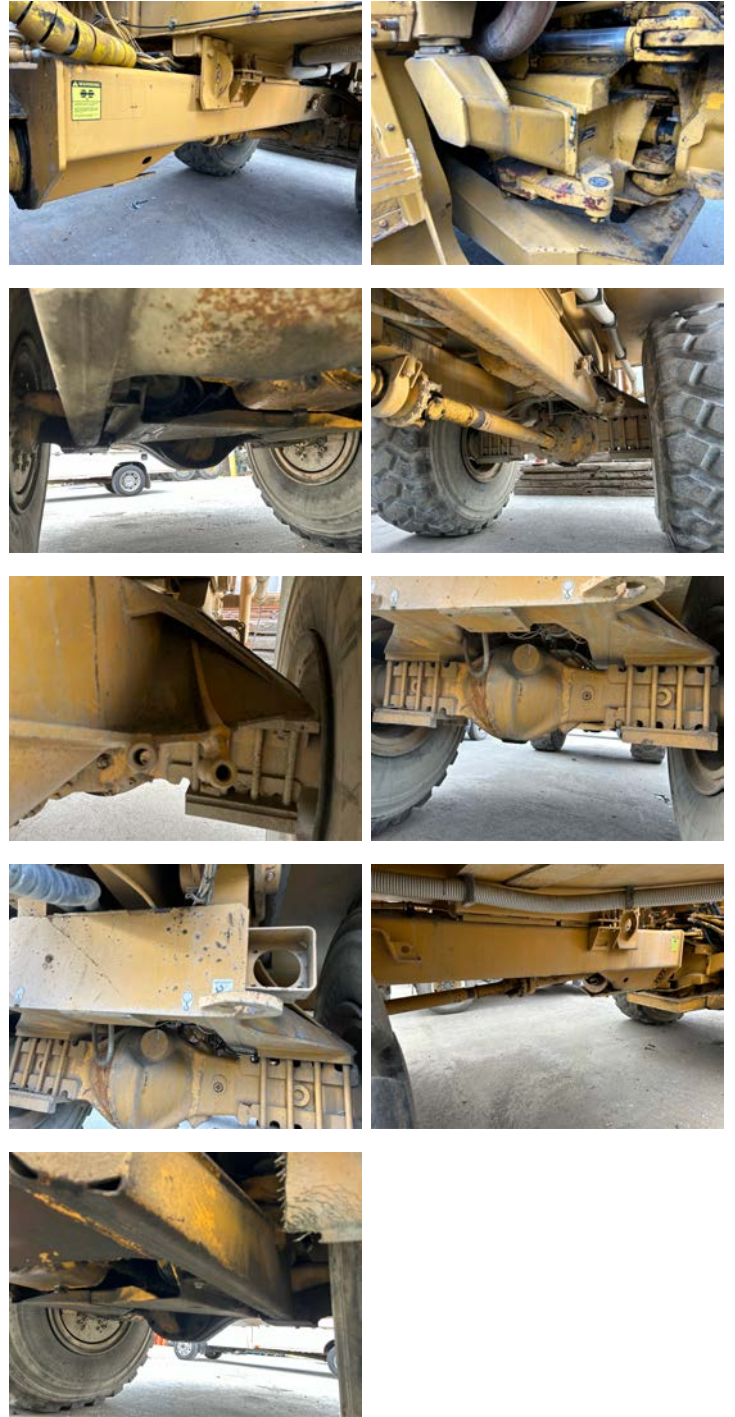
## Coupler Photos

**Hard Bar Photos**

**Close-up Exterior Photos**



**Chassis Photos**



## Undercarriage Condition

**Undercarriage Type**  
Wheels

**Front Left Tire - Photos**

**Tire Size**

23.5R25

**Tire Brand**

Aeolus

**Front Left Tire - Ratio Remaining**

30%

**Rear Left Tire - Ratio Remaining**

50%

**Front Right Tire - Ratio Remaining**

30%

**Rear Right Tire - Ratio Remaining**

50%

**Wheel and Tire Condition**

Good condition but low tread

**Left Track - Ratio Remaining**

**Right Track - Ratio Remaining**

**Track Condition**

**Pad Width Instructions**

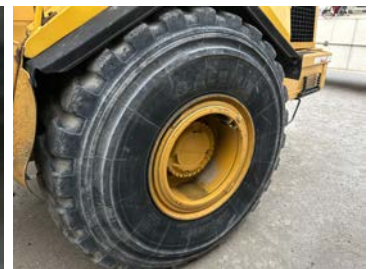
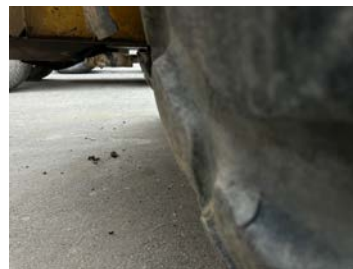
Take photo of tape measure on pad/grousers



**Rear Left Tire - Photos**



**Front Right Tire - Photos**



**Rear Right Tire - Photos**



**Left Track - Photos**

**Right Track - Photos**

**Pad Width Photo**

**Interior Condition**

**Interior Condition**



## Engine Condition

### Engine Info

Gather general engine information if available (i.e., Make, Model, Cylinders, type, Horsepower).

### Emissions Tier

### Engine Serial Number

TD73KCE

### Unusual Noises (Upon Start-up, Idle, Shutdown)

No

### Engine Exhaust Color

Clear

### Engine Type (Make, Model, Cylinders, HP)

Volvo 6.7 litre

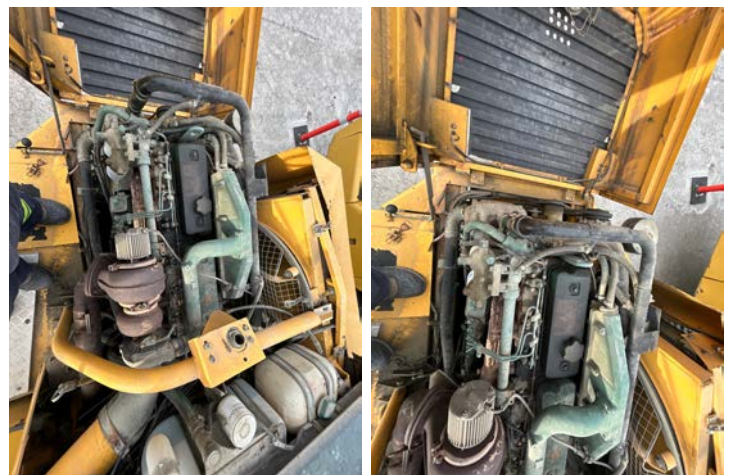
### Blow-by (Visual Observation Check)

No

### Engine Smoke (Upon Start-up, Idle, Shutdown)

Yes

### Engine Compartment Photos





**Active Engine Codes**

**A/C Compressor**

**Engine Data Plate**



**EPA Label**

## Hydraulic System

### Hydraulic Pumps / Motors Condition

Unable to test

### Hydraulic Lines/Fittings Condition

Unable to test

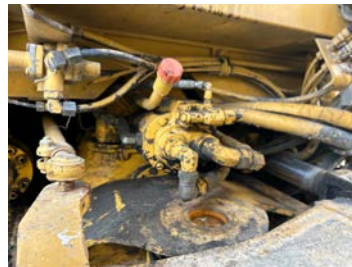
### Hydraulic Cylinders Condition

Light scoring on rod

### Hydraulic Cylinder Photos



### Hydraulic System Photos



### Hydraulic Leaks Photos

## Drivetrain

### Hydrostatic Transmission?

NA

### 2 Speed?

NA

### Drive

4WD

### Transmission Condition

Unable to test

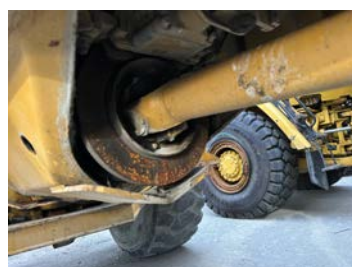
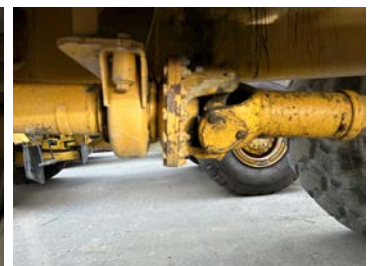
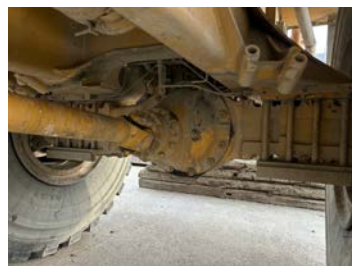
### Axle Condition

Unable to test

### Parking Brake Function

Unable to test

### Drivetrain Photos







## Function Check

**Hydraulic Operation**

1

**Service Brakes Operation**

1

**Electronics Operation**

5

**Forward / Reverse**

1

**Attachment Operation**

1

**Park Brake Operation**

5

## Attachments

**Attachment Type**

**Attachment Make**

**Attachment Size / Specs**

**Attachment Serial Number**

**Attachment Photos**

**Attachment Serial Number Photo**

**Attachment Width Photo**