

## General Equipment Info

**Year**

**Make**

John Deere

**Model**

290G

**Hours**

10,614

**Serial Number**

1FF290GXCCD705640

**Machine Options**

Cab, Heat, A/C, Aux. Hydraulics, Digging Bucket, Cleanup Bucket

**Address**

**City**

Abbotsford

**Province/State**

BC

**Inspector Name**

Flori

**Date of Inspection**

02-09-2024

**Hour Meter - Idle Hours**

**Serial Number Plate**



**Hour Meter - SMU Hours**



## Dimensions

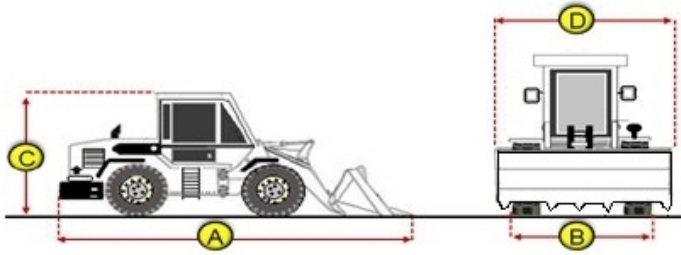
**Measurement Guide**

**A. Length (ft and inches)**

27'

**B. Width (ft and inches)**

11'2"



**C. Height (ft and inches)**

12'

**D. Shipping Width (ft and inches)**

11'2"

**Operational Weight (lbs)**

## Exterior Condition

**Coupler Style**

Wedge Lock

**Coupler Brand**

**Coupler Width (Between bucket ears)**

20 1/2"

**Stick Width (Between bucket ears)**

**Pin Size**

**Center to Center of Bucket Pins**

**Excavator Boom Length**

12'4"

**Loader Bucket Pin Height**

**Width Between Bucket Ears**

**Top Pin Size**

**Bottom Pin Size**

**Center to Center of Coupler Pins**

## Exterior Walkaround Photos



## Coupler Photos



### Hard Bar Photos

### Close-up Exterior Photos







### Chassis Photos



## Undercarriage Condition

### Undercarriage Type

Tracks

### Tire Size

### Tire Brand

### Front Left Tire - Ratio Remaining

### Rear Left Tire - Ratio Remaining

### Front Right Tire - Ratio Remaining

### Rear Right Tire - Ratio Remaining

### Wheel and Tire Condition

### Left Track - Ratio Remaining

90%

### Right Track - Ratio Remaining

90%

### Track Condition

Good condition, low wear

### Pad Width Instructions

Take photo of tape measure on pad/grousers

### Front Left Tire - Photos

### Rear Left Tire - Photos

### Front Right Tire - Photos

### Rear Right Tire - Photos

### Left Track - Photos





### Right Track - Photos





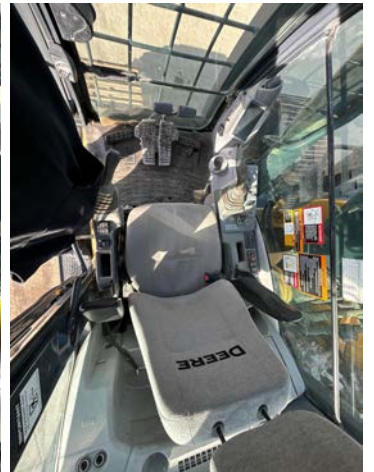


**Pad Width Photo**



## Interior Condition

**Interior Condition**





## Engine Condition

### Engine Info

Gather general engine information if available (i.e., Make, Model, Cylinders, type, Horsepower).

### Emissions Tier

### Engine Serial Number

### Unusual Noises (Upon Start-up, Idle, Shutdown)

No

### Engine Exhaust Color

Clear

### Engine Type (Make, Model, Cylinders, HP)

John Deere

### Blow-by (Visual Observation Check)

Yes

### Engine Smoke (Upon Start-up, Idle, Shutdown)

No

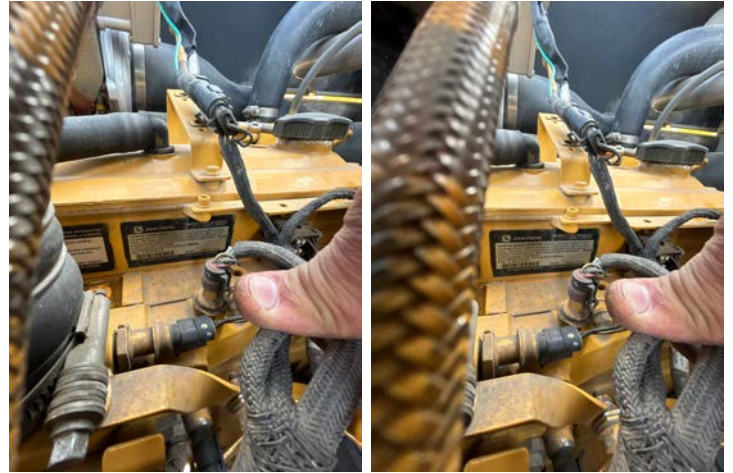
### Engine Compartment Photos



### Active Engine Codes

A/C Compressor

Engine Data Plate



EPA Label

## Hydraulic System

### Hydraulic Pumps / Motors Condition

Hydraulic pumps & motors are dry and in good condition

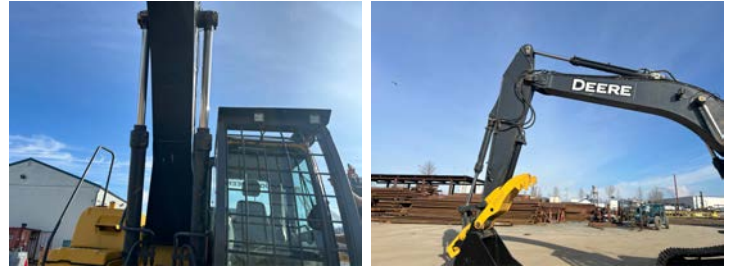
### Hydraulic Lines/Fittings Condition

Hydraulic Lines & Fittings are clean and in good condition

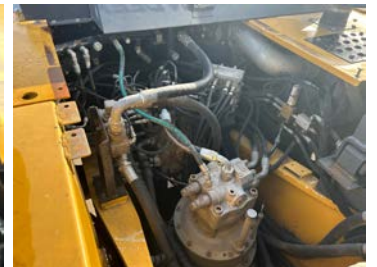
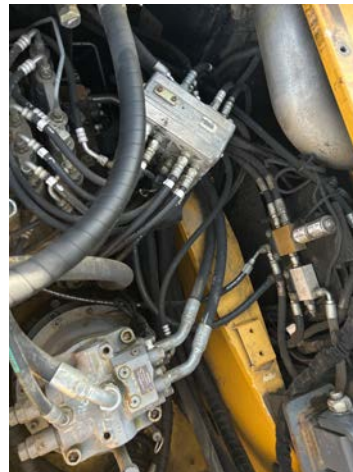
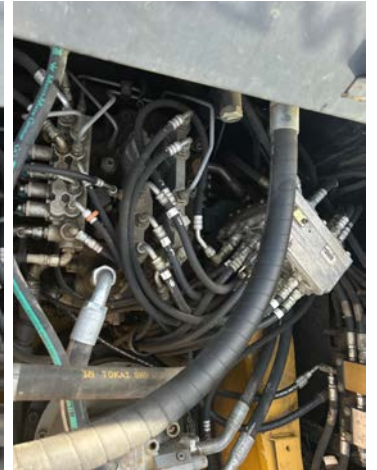
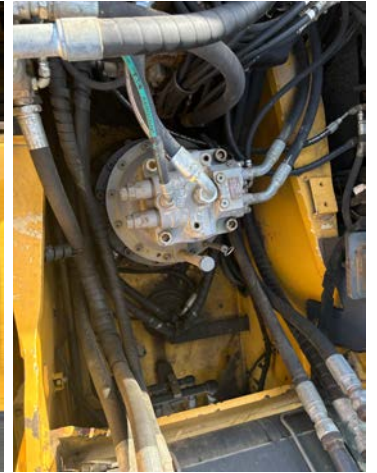
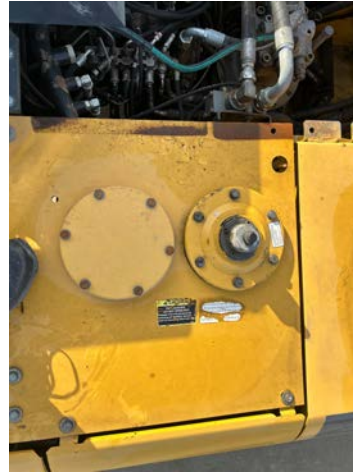
### Hydraulic Cylinders Condition

Hydraulic cylinders are clean and in good condition

### Hydraulic Cylinder Photos



### Hydraulic System Photos



**Hydraulic Leaks Photos**

## Drivetrain

**Hydrostatic Transmission?**

**2 Speed?**

**Drivetrain Photos**



**Drive**

**Transmission Condition**

**Axle Condition**

**Parking Brake Function**

## Function Check

**Hydraulic Operation**

5

**Service Brakes Operation**

5

**Electronics Operation**

5

**Forward / Reverse**

5

**Attachment Operation**

5

**Park Brake Operation**

5

## Attachments

**Attachment Type**

Digging bucket

**Attachment Make**

CWS

**Attachment Size / Specs**

**Attachment Serial Number**

0013367

**Attachment Photos**



**Attachment Serial Number Photo**



**Attachment Width Photo**

