

General Equipment Info

Year
2008

Make
CAT

Model
D7R

Hours
8,286

Serial Number
2EN01201

Machine Options
Cab, A/C, SU Blade, Ripper, Heat

Address
Farm

City
Killdeer

Province/State
ND

Inspector Name
Steve Hodgson

Date of Inspection
02-14-2024

Hour Meter - Idle Hours

Serial Number Plate

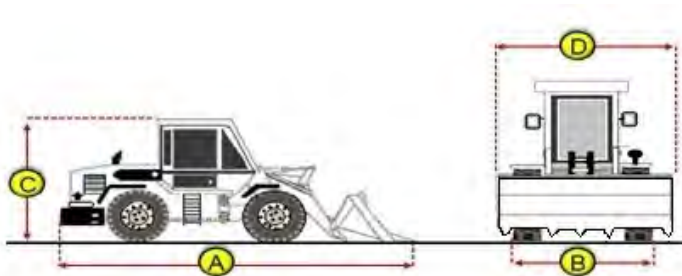


Hour Meter - SMU Hours



Dimensions

Measurement Guide



A. Length (ft and inches)

na

B. Width (ft and inches)

na

C. Height (ft and inches)

na

D. Shipping Width (ft and inches)

na

Operational Weight (lbs)

na

Exterior Condition

Coupler Style

Coupler Brand

Coupler Width (Between bucket ears)

Stick Width (Between bucket ears)

Pin Size

Center to Center of Bucket Pins

Excavator Boom Length

Loader Bucket Pin Height

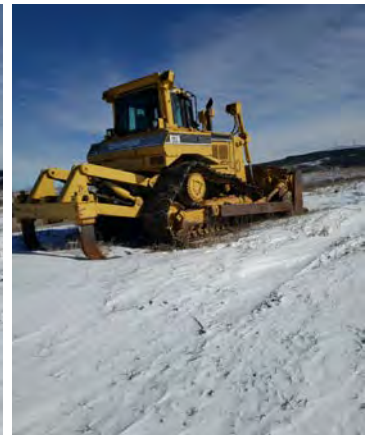
Width Between Bucket Ears

Top Pin Size

Bottom Pin Size

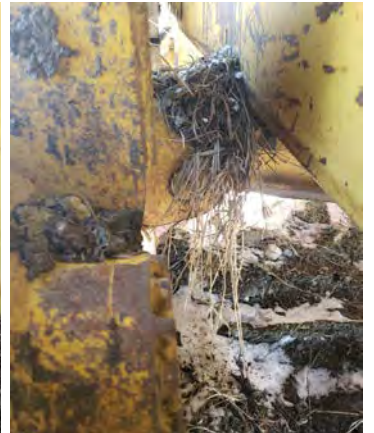
Center to Center of Coupler Pins

Exterior Walkaround Photos

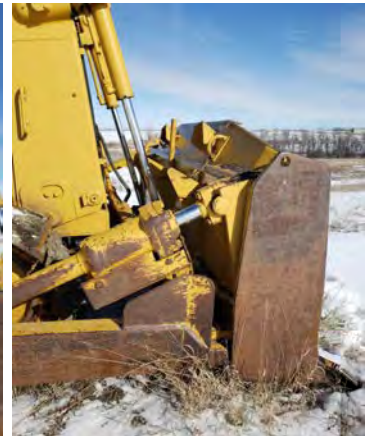


Coupler Photos

Hard Bar Photos

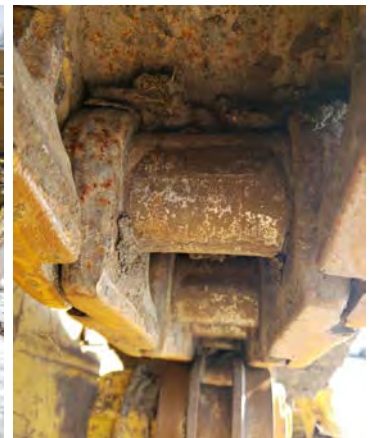
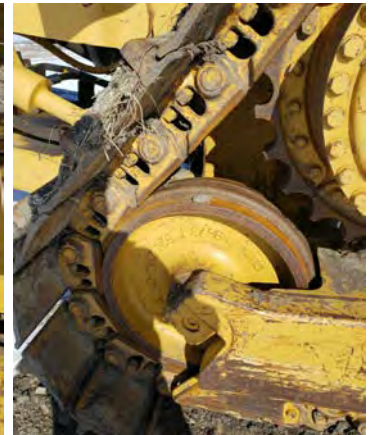


Close-up Exterior Photos



Chassis Photos





Undercarriage Condition

Undercarriage Type

Tracks

Tire Size

Tire Brand

Front Left Tire - Ratio Remaining

Rear Left Tire - Ratio Remaining

Front Right Tire - Ratio Remaining

Rear Right Tire - Ratio Remaining

Wheel and Tire Condition

Left Track - Ratio Remaining

90%

Right Track - Ratio Remaining

90%

Front Left Tire - Photos

Rear Left Tire - Photos

Front Right Tire - Photos

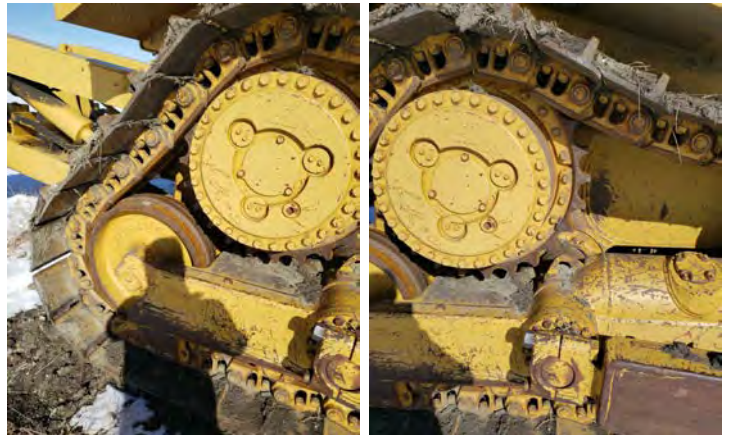
Rear Right Tire - Photos

Left Track - Photos

Track Condition

Pad Width Instructions

Take photo of tape measure on pad/grousers



Right Track - Photos



Pad Width Photo



Interior Condition

Interior Condition





Engine Condition

Engine Info

Gather general engine information if available (i.e., Make, Model, Cylinders, type, Horsepower).

Emissions Tier

Tier 3

Engine Serial Number

2EN01201

Unusual Noises (Upon Start-up, Idle, Shutdown)

No

Engine Exhaust Color

Clear

Engine Type (Make, Model, Cylinders, HP)

Cat

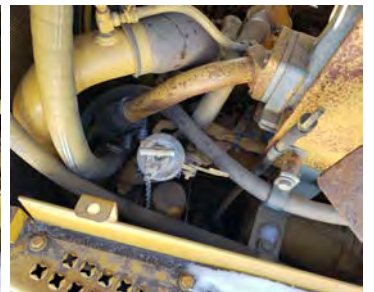
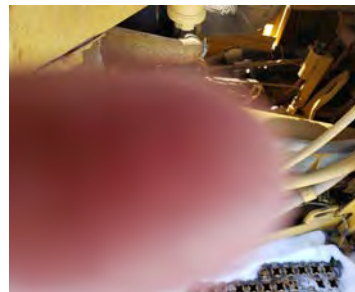
Blow-by (Visual Observation Check)

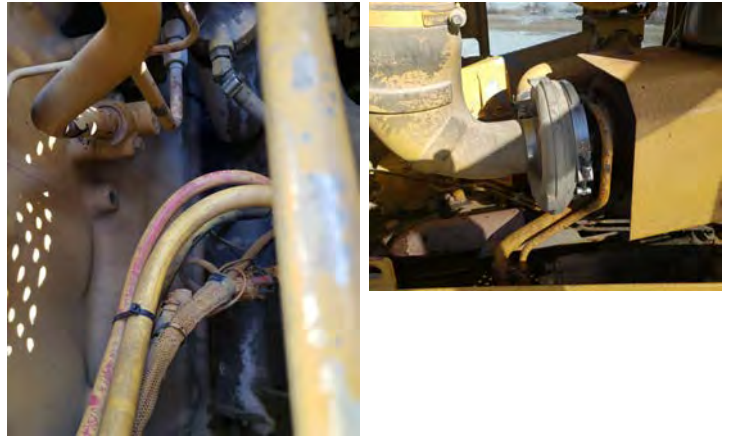
No

Engine Smoke (Upon Start-up, Idle, Shutdown)

No

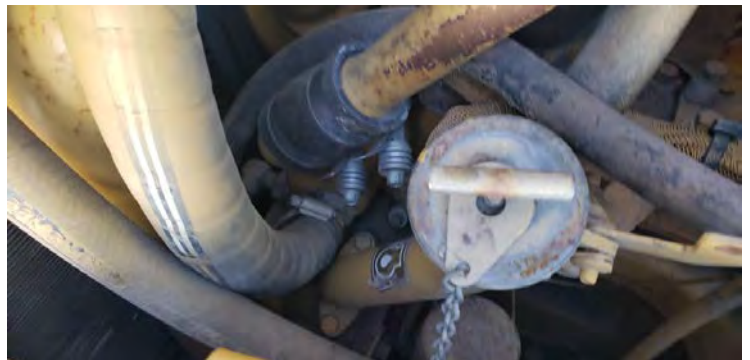
Engine Compartment Photos





Active Engine Codes

A/C Compressor



Engine Data Plate



EPA Label

Hydraulic System

Hydraulic Pumps / Motors Condition

Active leaks observed

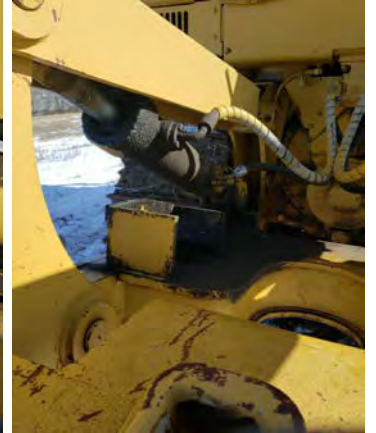
Hydraulic Lines/Fittings Condition

Hydraulic Lines & Fittings are clean and in good condition

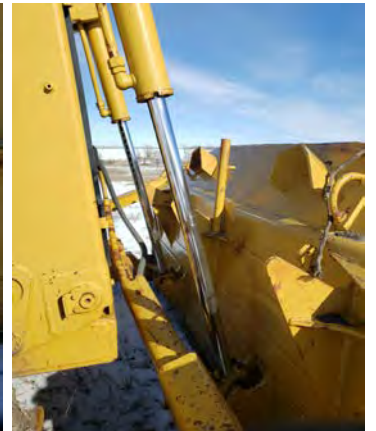
Hydraulic Cylinders Condition

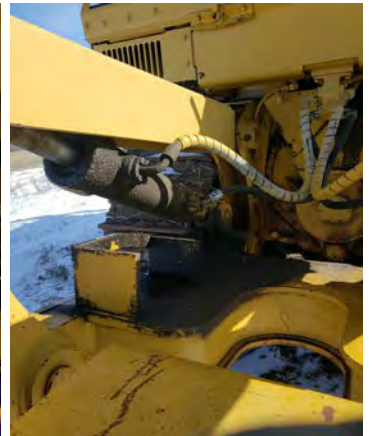
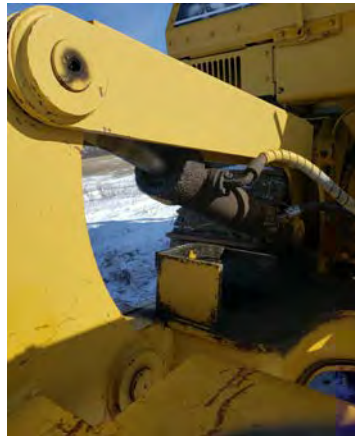
Seepages observed

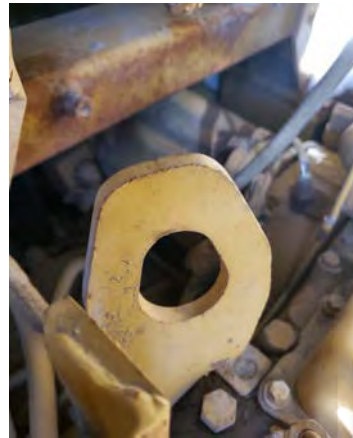
Hydraulic Cylinder Photos



Hydraulic System Photos







Hydraulic Leaks Photos

Drivetrain

Hydrostatic Transmission?

Yes

2 Speed?

Yes

Drive

Transmission Condition

Good forward and reverse function

Axle Condition

No leaks, unusual noises or vibrations

Parking Brake Function

Strong, holds machine

Drivetrain Photos

Function Check

Hydraulic Operation

5

Service Brakes Operation

N/A

Electronics Operation

5

Forward / Reverse

N/A

Attachment Operation

N/A

Park Brake Operation

5

Attachments

Attachment Type

ripper

Attachment Make

cat

Attachment Size / Specs

Attachment Serial Number

Attachment Photos



Attachment Serial Number Photo



Attachment Width Photo

1

Additional Attachments

Attachment Type

ripper multi shamk

Attachment Make

Cat

Attachment Size / Specs

Attachment Serial Number

Attachment Photos

Attachment Serial Number Photo

Attachment Width Photo

2

Additional Attachments

Attachment Type

su blade

Attachment Photos

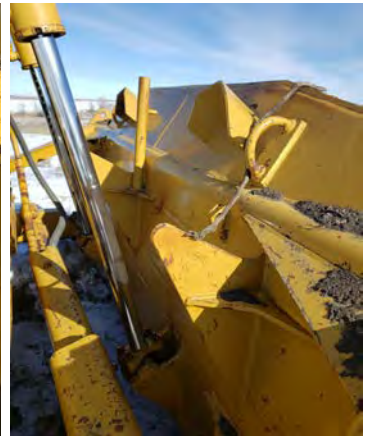
Attachment Make

cat

Attachment Size / Specs

11'8"

Attachment Serial Number



Attachment Serial Number Photo

Attachment Width Photo

