

General Equipment Info

Year

2019

Make

Komatsu

Model

D85

Hours

0

Serial Number

KMT0D128CHA023203

Machine Options

Cab, Heat, A/C, Ripper

Address

East of Didsbury he 582 to rr285 1 mile s

City

Didsbury

Province/State

AB

Inspector Name

Adam Dow

Date of Inspection

03-12-2024

Hour Meter - Idle Hours

Serial Number Plate

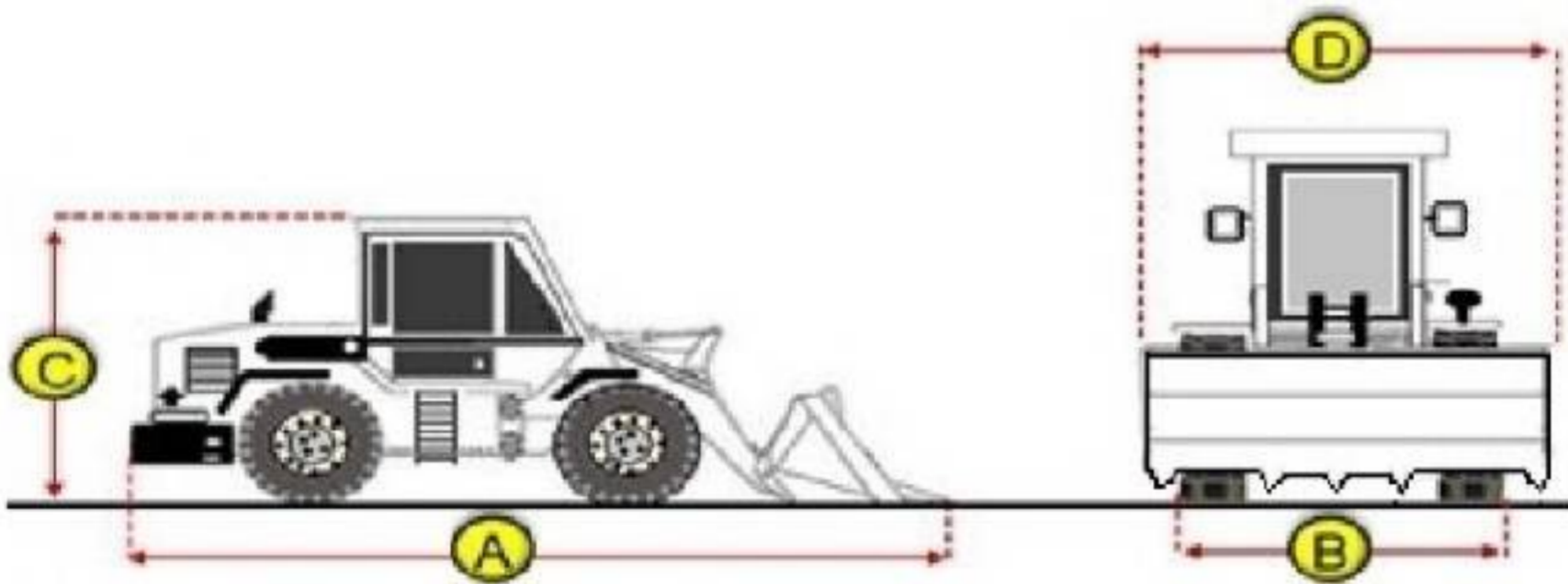


Hour Meter - SMU Hours



Dimensions

Measurement Guide



A. Length (ft and inches)

23' 11"

B. Width (ft and inches)

8' 9"

C. Height (ft and inches)

11' 4"

D. Shipping Width (ft and inches)

11' 10"

Operational Weight (lbs)

Exterior Condition

Coupler Style

Exterior Walkaround Photos

Coupler Brand

Coupler Width (Between bucket ears)

Stick Width (Between bucket ears)

Pin Size

Center to Center of Bucket Pins

Excavator Boom Length

Loader Bucket Pin Height

Width Between Bucket Ears

Top Pin Size

Bottom Pin Size

Center to Center of Coupler Pins



Coupler Photos

Hard Bar Photos

Close-up Exterior Photos





Chassis Photos



Undercarriage Condition

Undercarriage Type

Tracks

Tire Size

Tire Brand

Front Left Tire - Ratio Remaining

Rear Left Tire - Ratio Remaining

Front Right Tire - Ratio Remaining

Front Left Tire - Photos

Rear Left Tire - Photos

Front Right Tire - Photos

Rear Right Tire - Photos

Left Track - Photos

Rear Right Tire - Ratio Remaining

Wheel and Tire Condition

Left Track - Ratio Remaining

90%

Right Track - Ratio Remaining

90%

Track Condition

Good condition, low wear

Pad Width Instructions

Take photo of tape measure on pad/grousers



Right Track - Photos

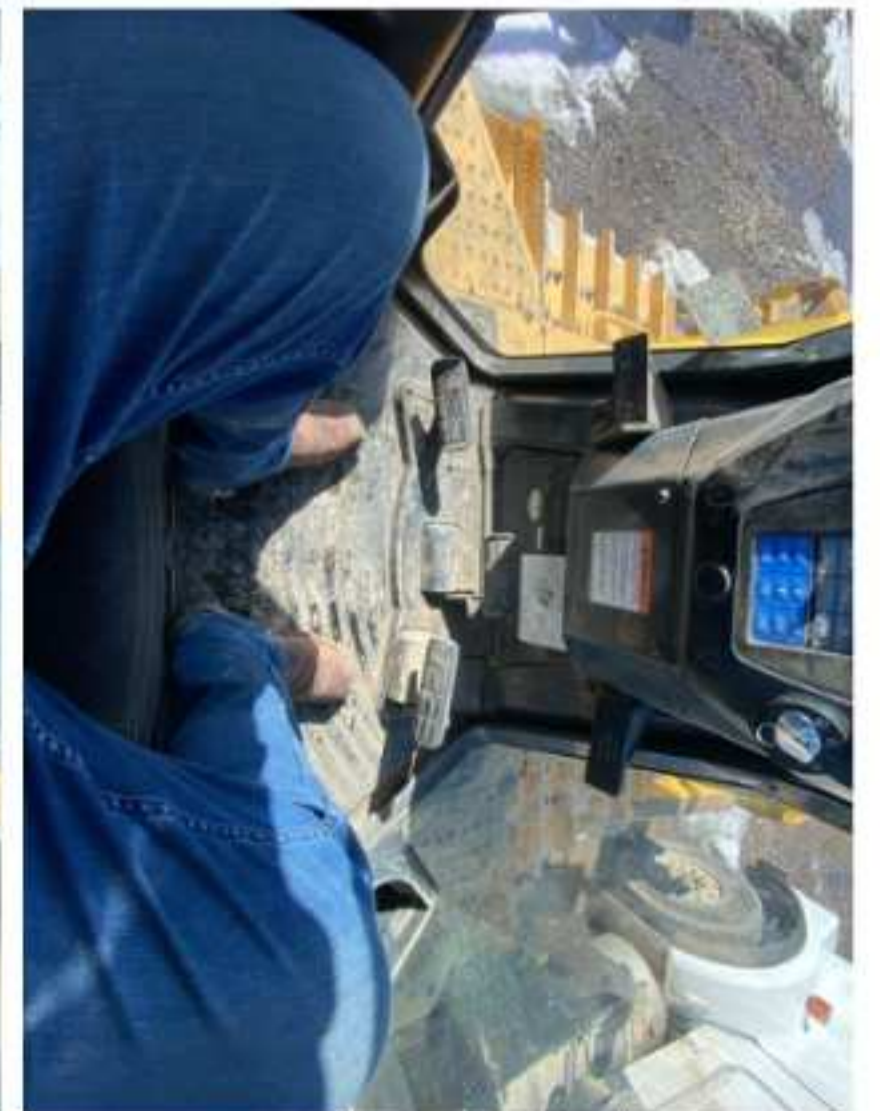


Pad Width Photo



Interior Condition

Interior Condition



Engine Condition

Engine Info

Gather general engine information if available (i.e., Make, Model, Cylinders, type, Horsepower).

Emissions Tier

Engine Serial Number

Unusual Noises (Upon Start-up, Idle, Shutdown)

Engine Exhaust Color

Engine Type (Make, Model, Cylinders, HP)

Blow-by (Visual Observation Check)

Engine Smoke (Upon Start-up, Idle, Shutdown)

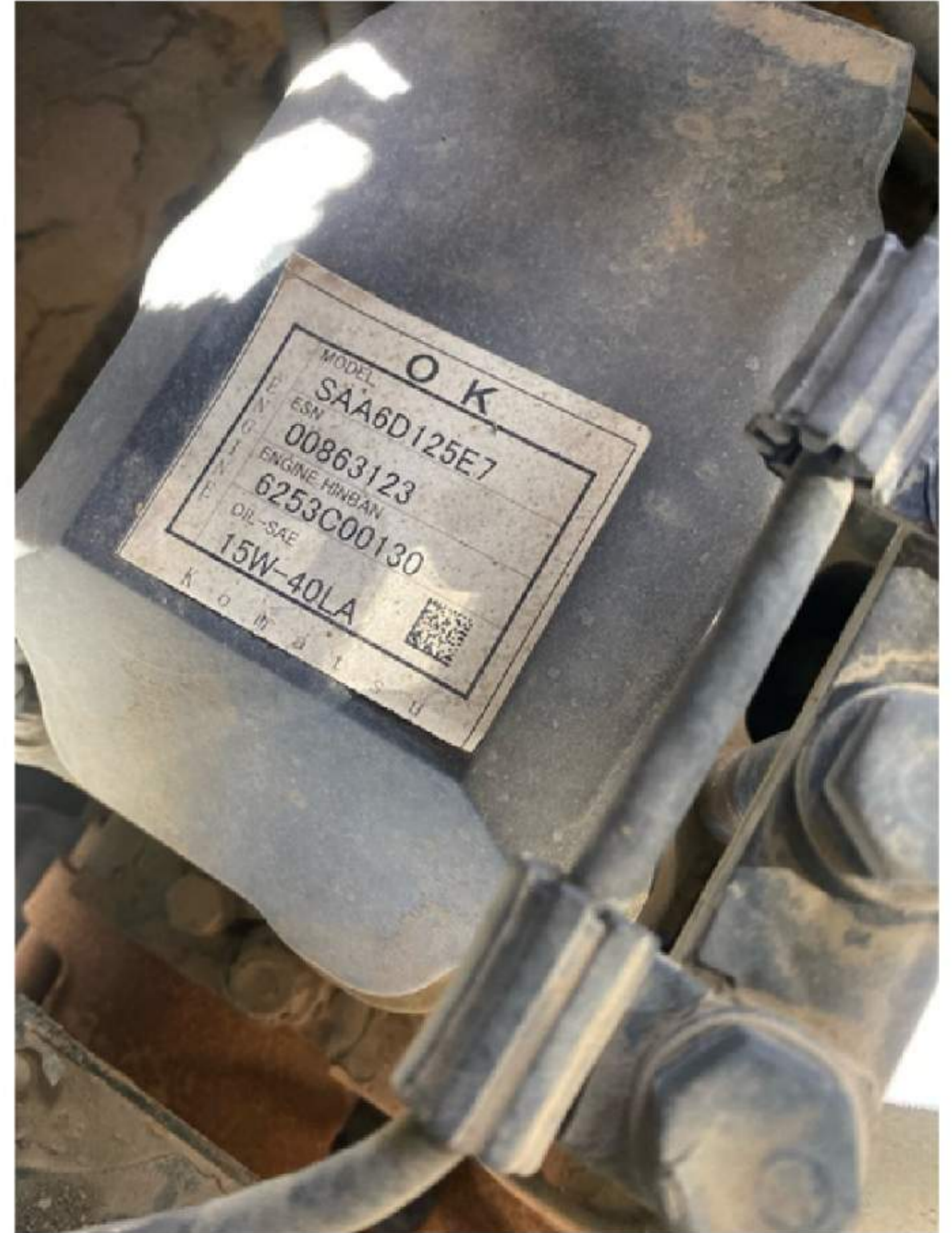
Engine Compartment Photos



Active Engine Codes

A/C Compressor

Engine Data Plate



EPA Label

Hydraulic System

Hydraulic Pumps / Motors Condition

Unable to test

Hydraulic Lines/Fittings Condition

Unable to test

Hydraulic Cylinders Condition

Unable to test

Hydraulic Cylinder Photos



Hydraulic System Photos

Hydraulic Leaks Photos

Drivetrain

Hydrostatic Transmission?

Yes

2 Speed?

Yes

Drive

Transmission Condition

Unable to test

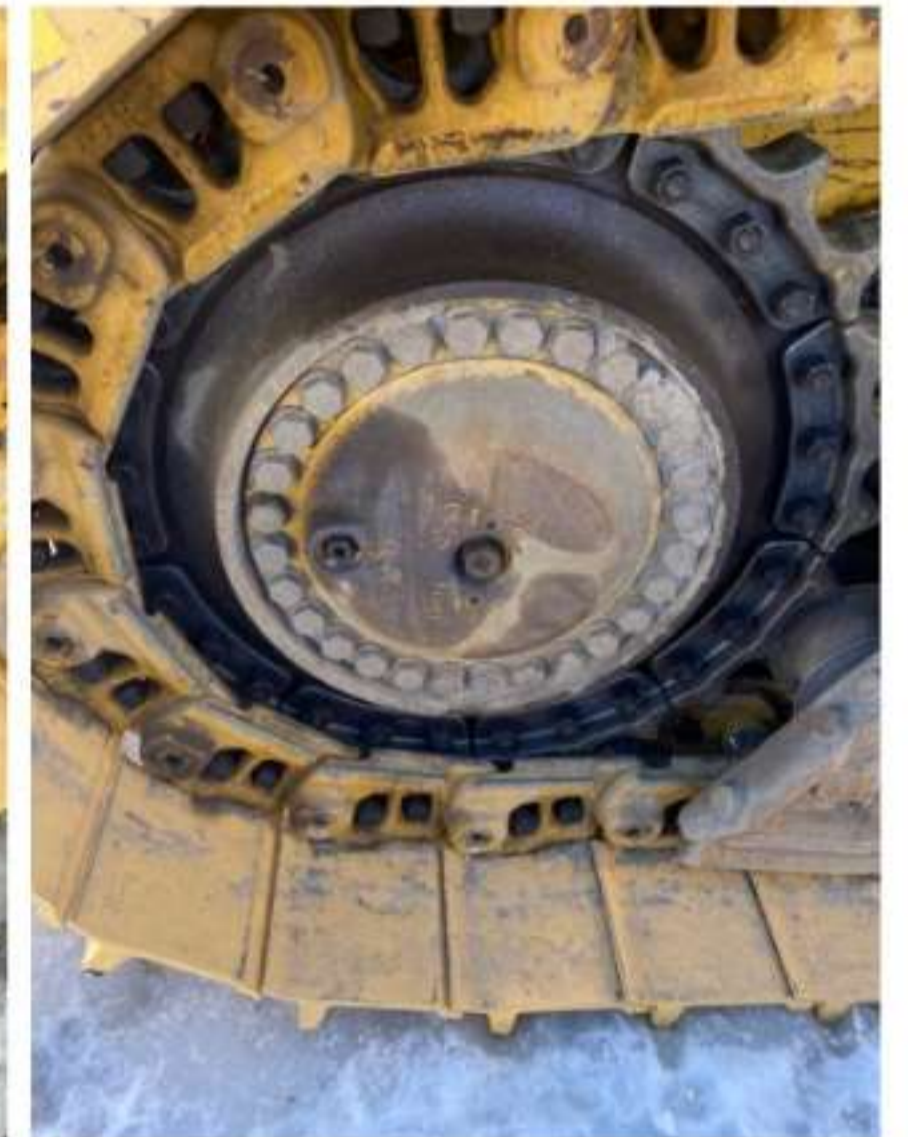
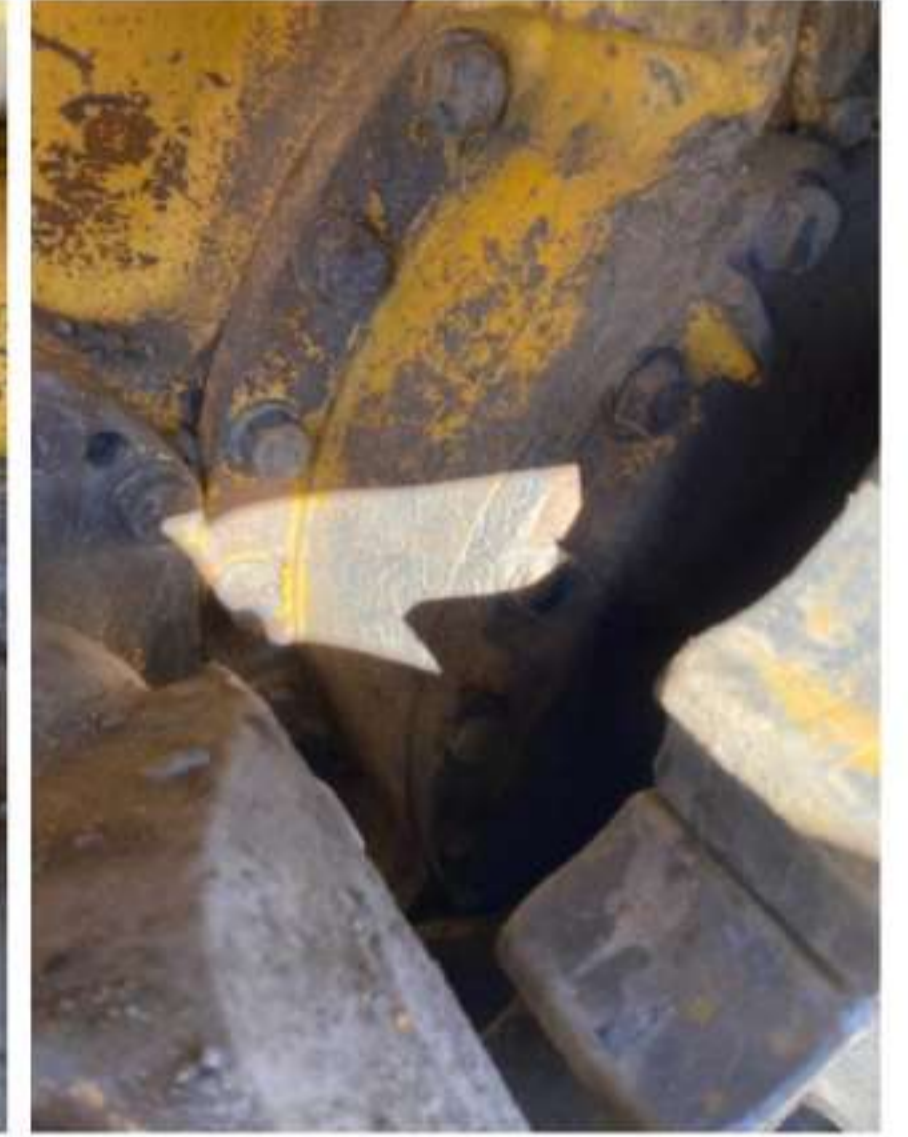
Axle Condition

Unable to test

Parking Brake Function

Unable to test

Drivetrain Photos



Function Check

Hydraulic Operation

1

Service Brakes Operation

1

Forward / Reverse

1

Attachment Operation

1

Electronics Operation

1

Park Brake Operation

1

Attachments

Attachment Type

Ripper

Attachment Make

Komatsu

Attachment Size / Specs

Three shank

Attachment Serial Number

2133

Attachment Photos





Attachment Serial Number Photo



Attachment Width Photo

