

## General Equipment Info

**Year**

**Make**

Cat

**Model**

335FLCR

**Hours**

3,515

**Serial Number**

XSGJ21152

**Machine Options**

Cab, Heat, A/C, Aux. Hydraulics, Quick Coupler, Backup Camera, Digging Bucket, Cleanup Bucket

**Address**

**City**

Vancouver

**Province/State**

BC

**Inspector Name**

Flori

**Date of Inspection**

03-07-2024

**Hour Meter - Idle Hours**

**Serial Number Plate**



**Hour Meter - SMU Hours**



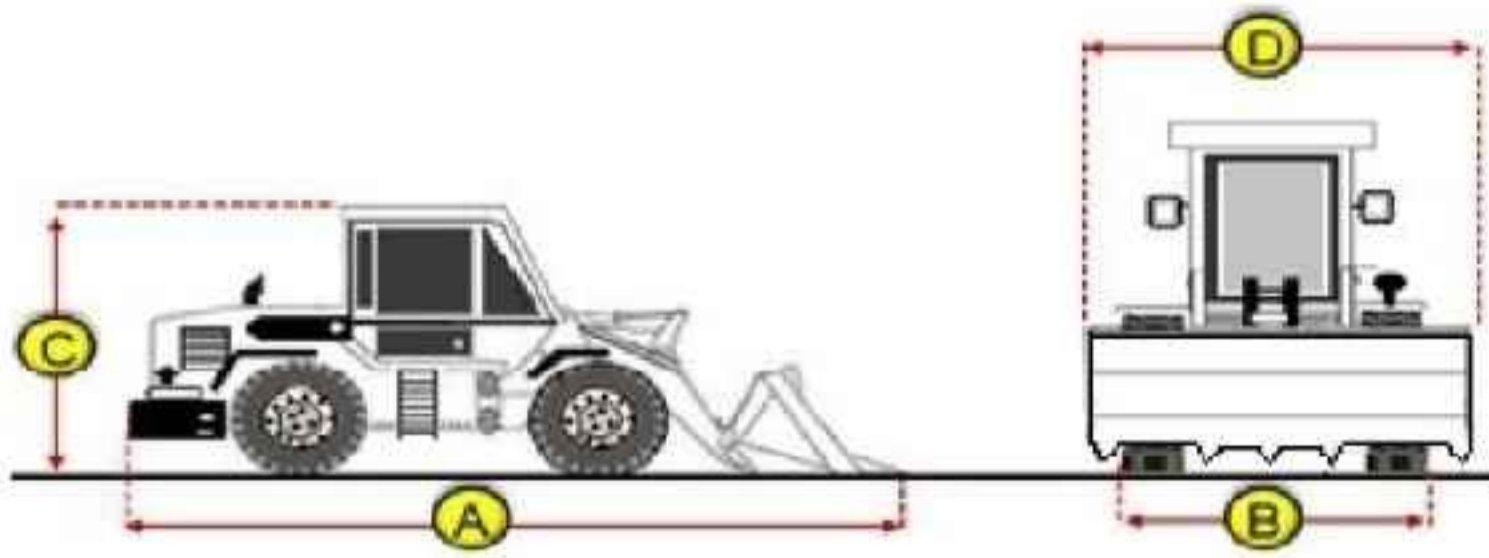
## Dimensions

**Measurement Guide**

**A. Length (ft and inches)**

28'

**B. Width (ft and inches)**



11'4"  
**C. Height (ft and inches)**

11'8"

**D. Shipping Width (ft and inches)**

11'4"

**Operational Weight (lbs)**

## Exterior Condition

### Coupler Style

Pin Grabber

### Coupler Brand

Cat

### Coupler Width (Between bucket ears)

### Stick Width (Between bucket ears)

16 1/2"

### Pin Size

3 1/2"

### Center to Center of Bucket Pins

19"

### Excavator Boom Length

### Loader Bucket Pin Height

### Width Between Bucket Ears

### Top Pin Size

### Bottom Pin Size

### Center to Center of Coupler Pins

### Exterior Walkaround Photos

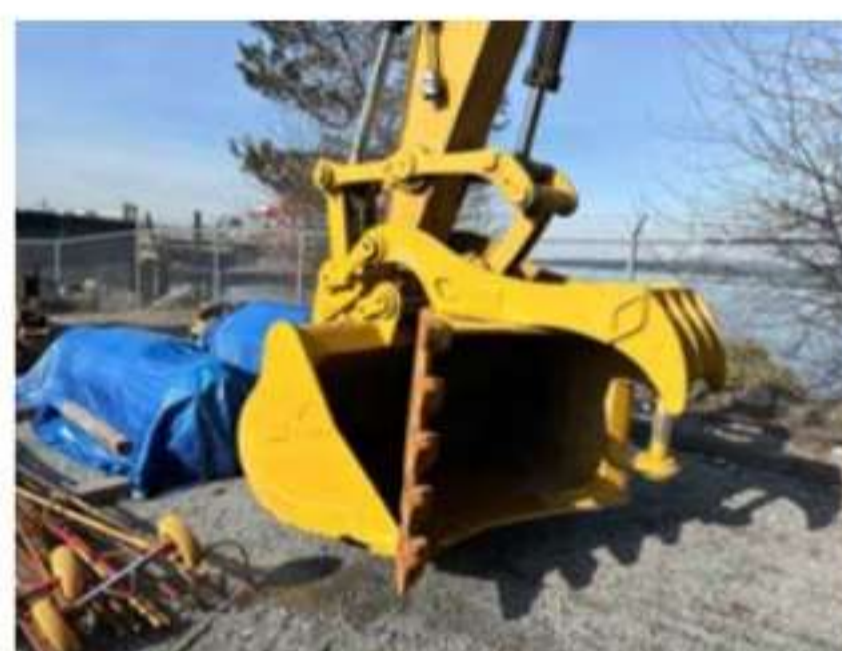


### Coupler Photos



**Hard Bar Photos**

**Close-up Exterior Photos**





**Chassis Photos**



## Undercarriage Condition

**Undercarriage Type**  
Tracks

**Front Left Tire - Photos**

**Rear Left Tire - Photos**

**Tire Size**

**Tire Brand**

**Front Left Tire - Ratio Remaining**

**Rear Left Tire - Ratio Remaining**

**Front Right Tire - Ratio Remaining**

**Rear Right Tire - Ratio Remaining**

**Wheel and Tire Condition**

**Left Track - Ratio Remaining**

50%

**Right Track - Ratio Remaining**

50%

**Track Condition**

Good condition, wear consistent with hours

**Pad Width Instructions**

Take photo of tape measure on pad/grousers

**Front Right Tire - Photos**

**Rear Right Tire - Photos**

**Left Track - Photos**



**Right Track - Photos**



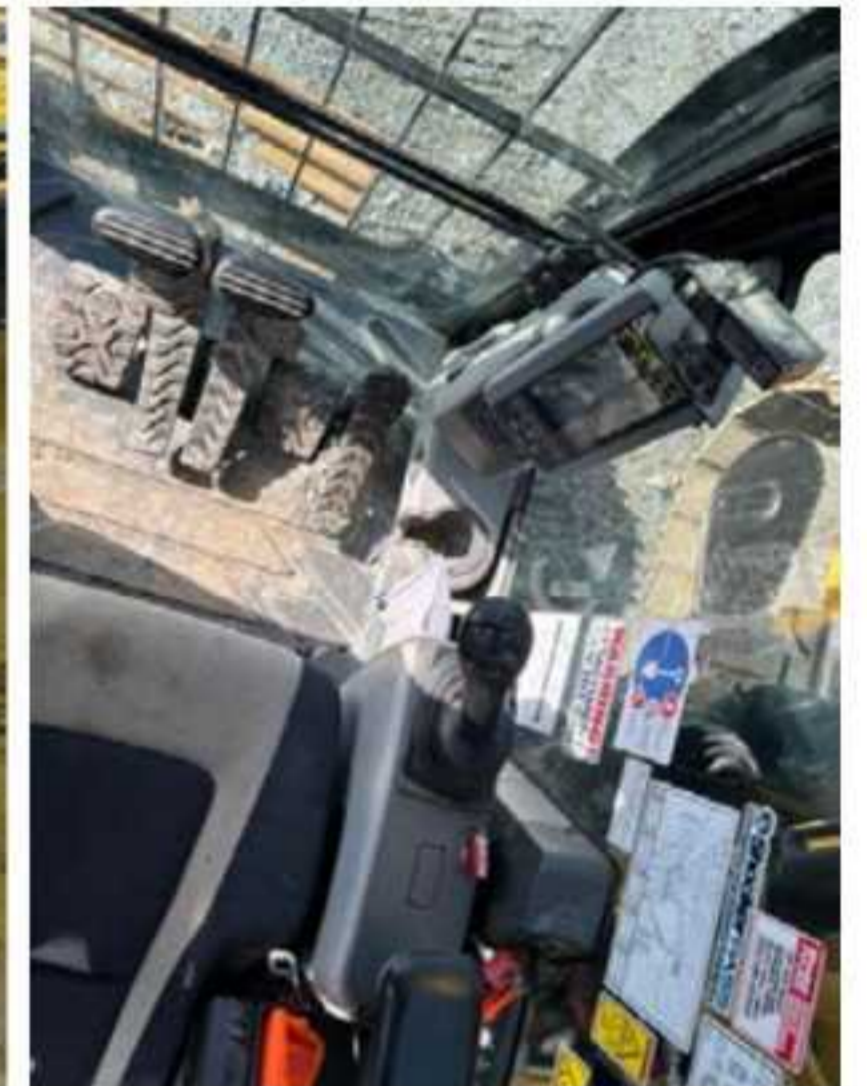
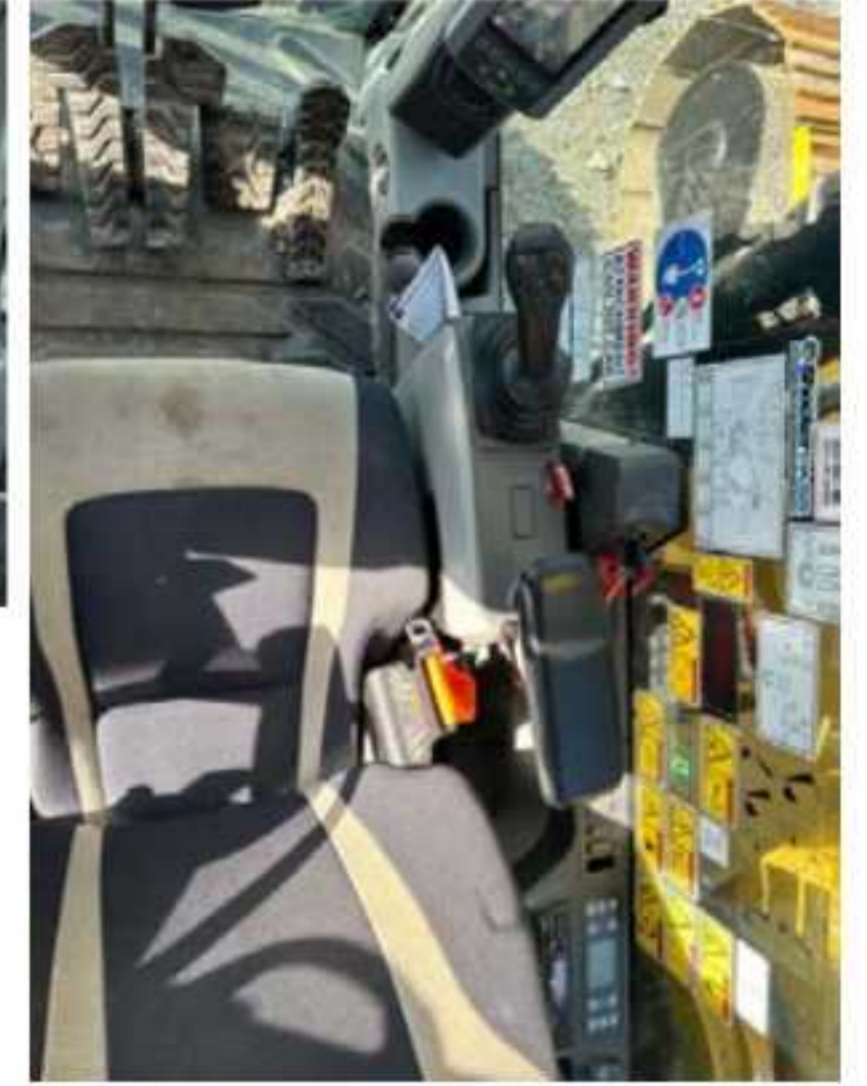
**Pad Width Photo**



## Interior Condition

### Interior Condition





## Engine Condition

### Engine Info

Gather general engine information if available (i.e., Make, Model, Cylinders, type, Horsepower).

### Emissions Tier

### Engine Compartment Photos



**Engine Serial Number**

**Unusual Noises (Upon Start-up, Idle, Shutdown)**

No

**Engine Exhaust Color**

Clear

**Engine Type (Make, Model, Cylinders, HP)**

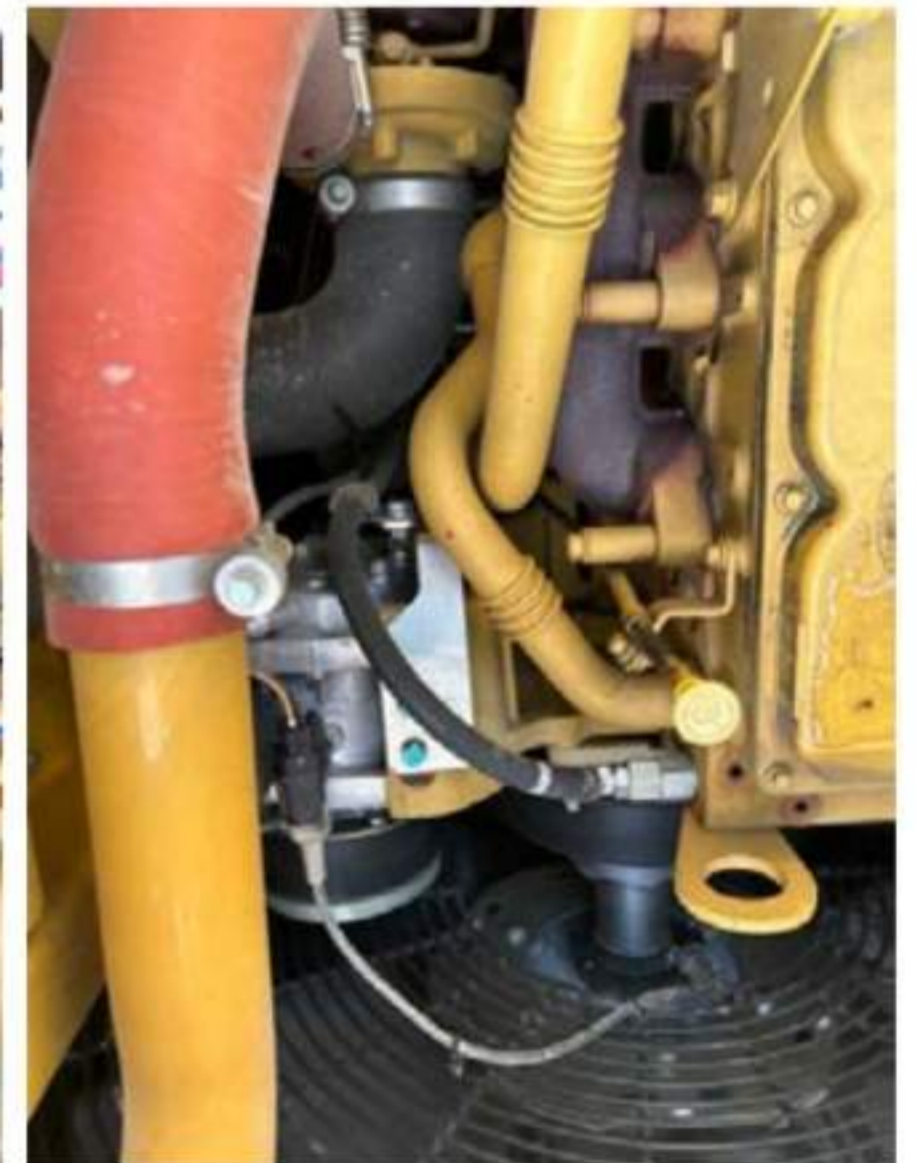
Cat

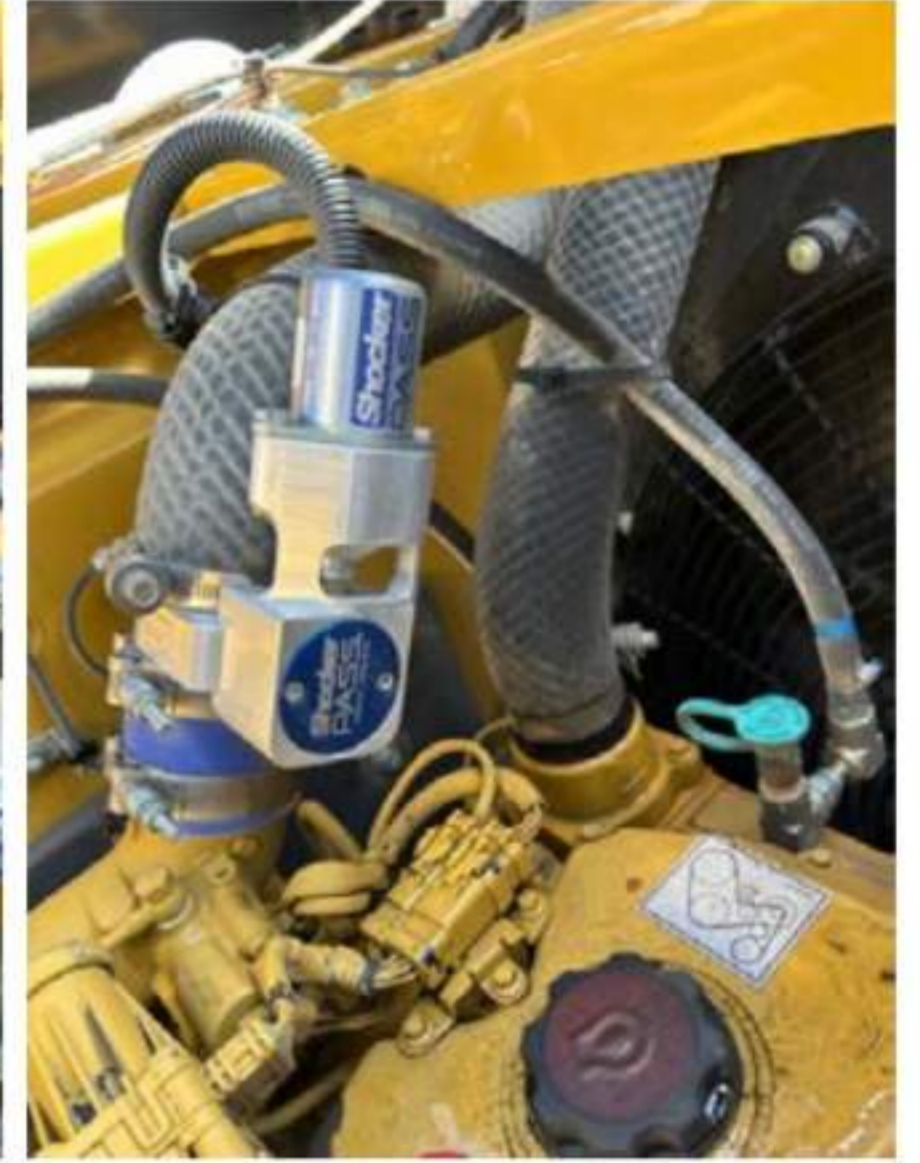
**Blow-by (Visual Observation Check)**

No

**Engine Smoke (Upon Start-up, Idle, Shutdown)**

No





**Active Engine Codes**

**A/C Compressor**

**Engine Data Plate**

**EPA Label**

## Hydraulic System

### **Hydraulic Pumps / Motors Condition**

Hydraulic pumps & motors are dry and in good condition

### **Hydraulic Lines/Fittings Condition**

Hydraulic Lines & Fittings are clean and in good condition

### **Hydraulic Cylinders Condition**

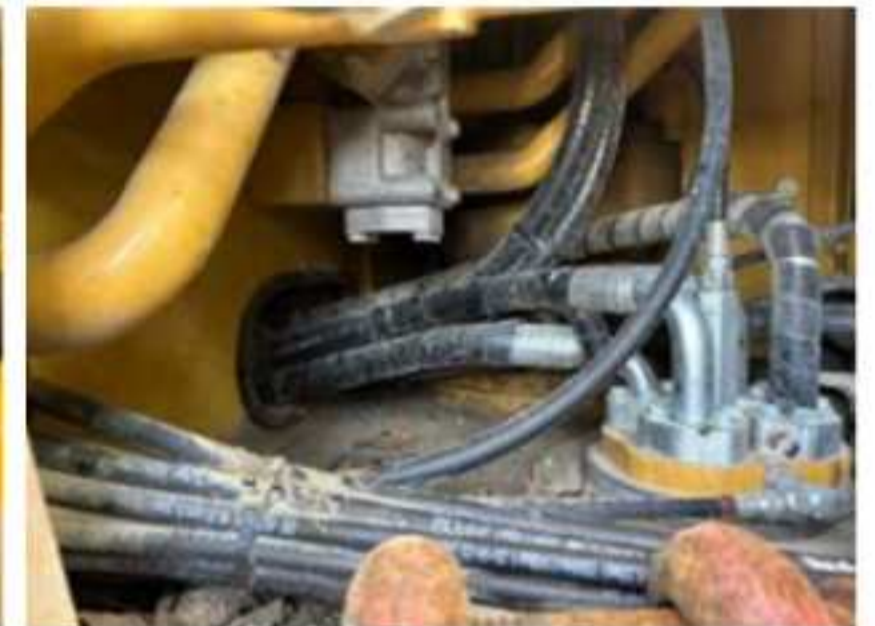
Hydraulic cylinders are clean and in good condition

### **Hydraulic Cylinder Photos**



**Hydraulic System Photos**





**Hydraulic Leaks Photos**

## Drivetrain

**Hydrostatic Transmission?**

**2 Speed?**

**Drive**

**Transmission Condition**

**Drivetrain Photos**

**Axle Condition**

**Parking Brake Function**

## Function Check

**Hydraulic Operation**

N/A

**Service Brakes Operation**

**Electronics Operation**

N/A

**Forward / Reverse**

N/A

**Attachment Operation**

N/A

**Park Brake Operation**

N/A

## Attachments

**Attachment Type**

Clean out bucket / digging bucket / thumb

**Attachment Make**

Cat

**Attachment Size / Specs**

70" wide CO / 42" wide DB

**Attachment Serial Number**

**Attachment Photos**



**Attachment Serial Number Photo**

**Attachment Width Photo**

