

## General Equipment Info

**Year**

2023

**Make**

Komatsu

**Model**

PC490LC-11

**Hours**

1,490

**Serial Number**

KMTPC251ANWA43316

**Machine Options**

Cab, Heat, A/C, Digging Bucket

**Address**

**City**

LACOMBE COUNTY

**Province/State**

(52.5102804, -113.8389795)

**Inspector Name**

Adam Dow

**Date of Inspection**

03-13-2024

**Hour Meter - Idle Hours**

**Serial Number Plate**

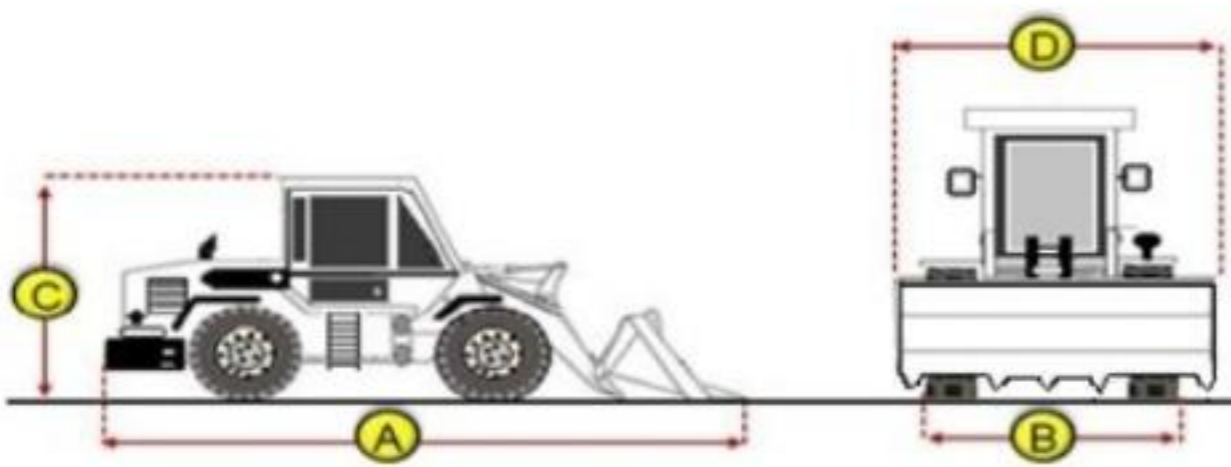


**Hour Meter - SMU Hours**



## Dimensions

### Measurement Guide



**A. Length (ft and inches)**

48'

**B. Width (ft and inches)**

12'

**C. Height (ft and inches)**

13' 3"

**D. Shipping Width (ft and inches)**

12'

**Operational Weight (lbs)**

## Exterior Condition

### Coupler Style

### Exterior Walkaround Photos



Wedge Lock  
**Coupler Brand**

Draig

**Coupler Width (Between bucket ears)**

32 1/2"

**Stick Width (Between bucket ears)**

**Pin Size**

**Center to Center of Bucket Pins**

**Excavator Boom Length**

**Loader Bucket Pin Height**

**Width Between Bucket Ears**

**Top Pin Size**

**Bottom Pin Size**

**Center to Center of Coupler Pins**



**Coupler Photos**





**Hard Bar Photos**

**Close-up Exterior Photos**













**Chassis Photos**





## Undercarriage Condition

### Undercarriage Type

Tracks

### Tire Size

### Tire Brand

### Front Left Tire - Ratio Remaining

### Rear Left Tire - Ratio Remaining

### Front Right Tire - Ratio Remaining

### Rear Right Tire - Ratio Remaining

### Wheel and Tire Condition

### Left Track - Ratio Remaining

70%

### Right Track - Ratio Remaining

70%

### Track Condition

Good condition, wear consistent with hours

### Pad Width Instructions

Take photo of tape measure on pad/grousers

### Front Left Tire - Photos

### Rear Left Tire - Photos

### Front Right Tire - Photos

### Rear Right Tire - Photos

### Left Track - Photos







**Right Track - Photos**







**Pad Width Photo**

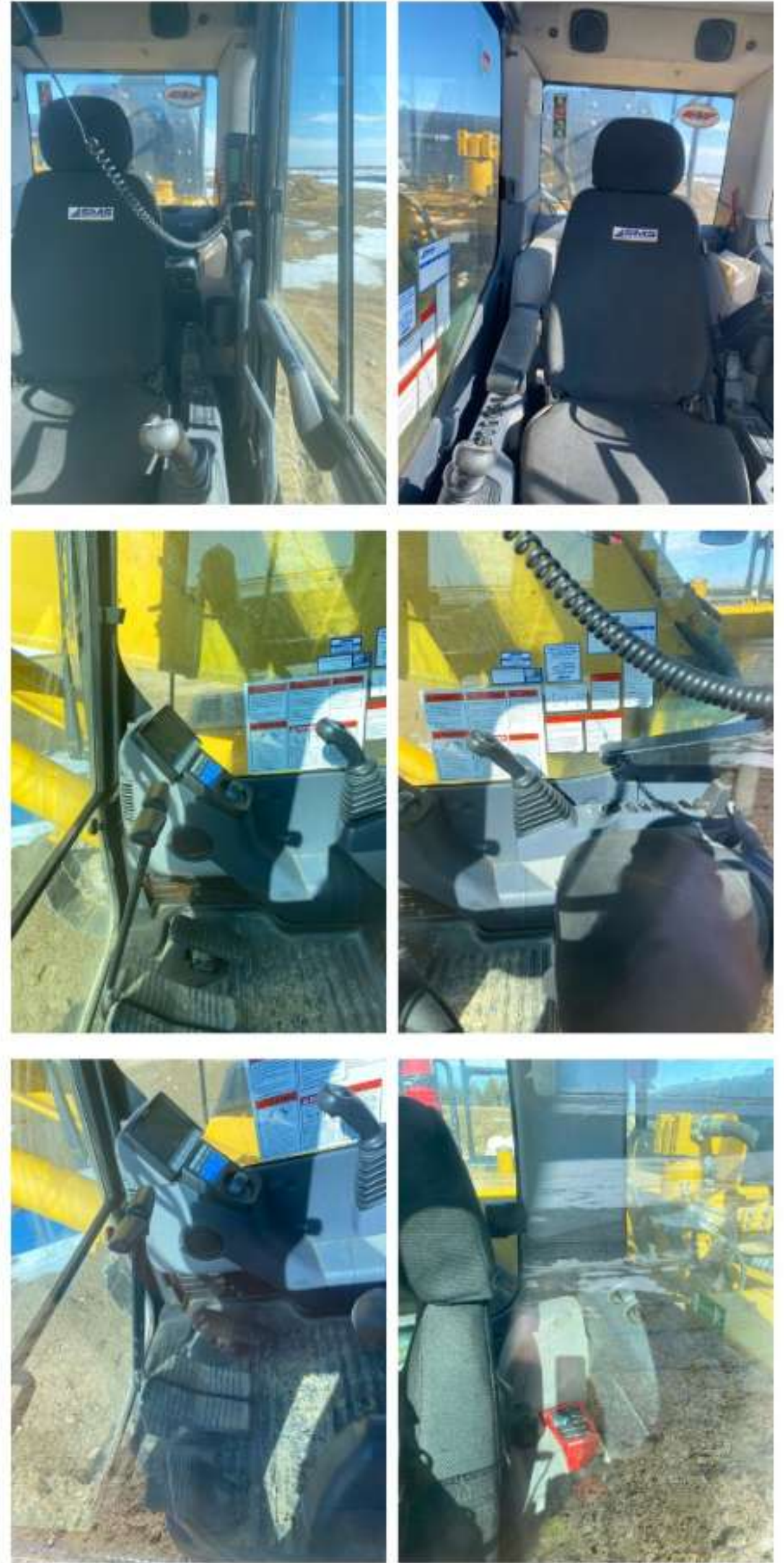




## Interior Condition

Interior Condition





## Engine Condition

### Engine Info

Gather general engine information if available (i.e., Make, Model, Cylinders, type, Horsepower).

### Emissions Tier

### Engine Compartment Photos



**Engine Serial Number**

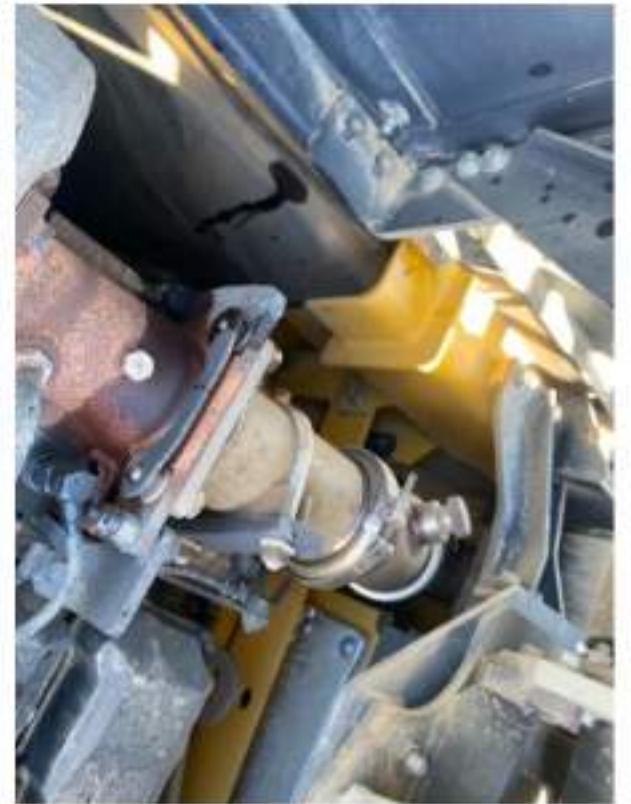
**Unusual Noises (Upon Start-up, Idle, Shutdown)**

**Engine Exhaust Color**

**Engine Type (Make, Model, Cylinders, HP)**

**Blow-by (Visual Observation Check)**

**Engine Smoke (Upon Start-up, Idle, Shutdown)**







**Active Engine Codes**

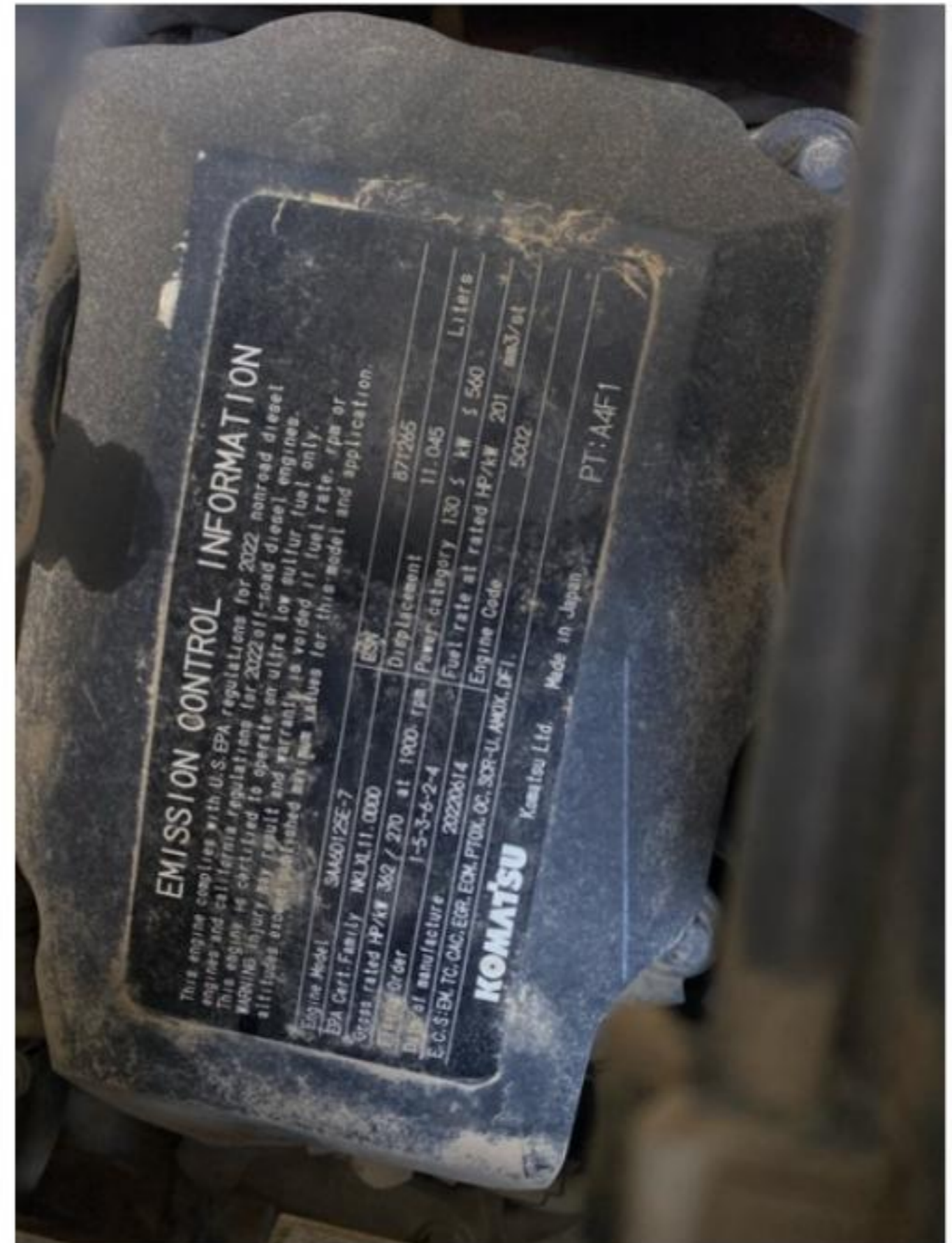
**A/C Compressor**

**Engine Data Plate**









## Hydraulic System

### Hydraulic Pumps / Motors Condition

Unable to test

### Hydraulic Lines/Fittings Condition

Unable to test

### Hydraulic Cylinders Condition

Unable to test

### Hydraulic Cylinder Photos





**Hydraulic System Photos**











Hydraulic Leaks Photos

## Drivetrain

**Hydrostatic Transmission?**

**2 Speed?**

**Drive**

**Transmission Condition**

Unable to test

**Axle Condition**

Unable to test

**Parking Brake Function**

Unable to test

**Drivetrain Photos**



## Function Check



**Hydraulic Operation**

1

**Service Brakes Operation**

1

**Electronics Operation**

1

**Forward / Reverse**

1

**Attachment Operation**

1

**Park Brake Operation**

1

## Attachments

**Attachment Type**

Dig bucket

**Attachment Make**

CRAIG

**Attachment Size / Specs**

48 1/2

**Attachment Serial Number**

T220511681

**Attachment Photos**



**Attachment Serial Number Photo**



**Attachment Width Photo**



