

## General Equipment Info

**Year**

2019

**Make**

Komatsu

**Model**

D65PXI-18

**Hours**

1

**Serial Number**

KMT0D127PJA091476

**Machine Options**

Cab, Heat, A/C, 6-Way Blade, Ripper

**Address**

(52.7828169, -112.7767845)

**City**

Edburg

**Province/State**

AB

**Inspector Name**

Adam Dow

**Date of Inspection**

03-13-2024

**Hour Meter - Idle Hours**

**Serial Number Plate**

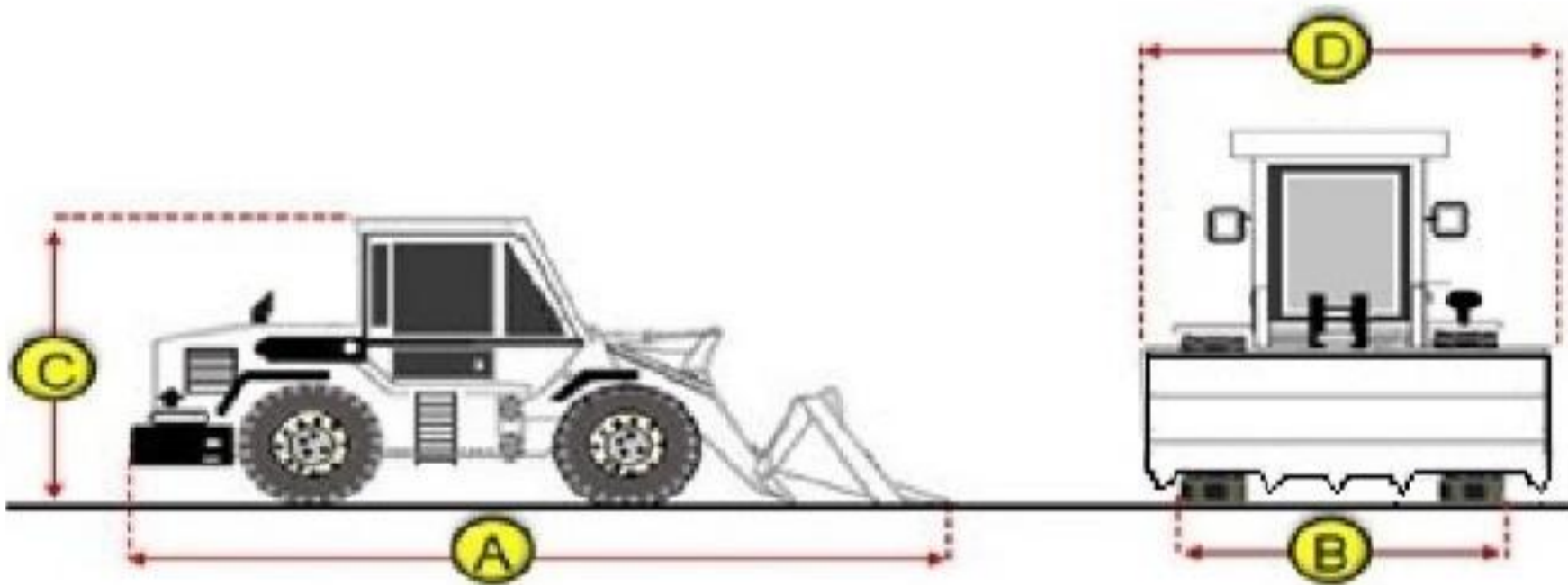


**Hour Meter - SMU Hours**



## Dimensions

### Measurement Guide



#### A. Length (ft and inches)

23' 4"

#### B. Width (ft and inches)

11' 11"

#### C. Height (ft and inches)

11' 9"

#### D. Shipping Width (ft and inches)

12' 6"

#### Operational Weight (lbs)

## Exterior Condition

### Coupler Style

### Exterior Walkaround Photos

**Coupler Brand**

**Coupler Width (Between bucket ears)**

**Stick Width (Between bucket ears)**

**Pin Size**

**Center to Center of Bucket Pins**

**Excavator Boom Length**

**Loader Bucket Pin Height**

**Width Between Bucket Ears**

**Top Pin Size**

**Bottom Pin Size**

**Center to Center of Coupler Pins**



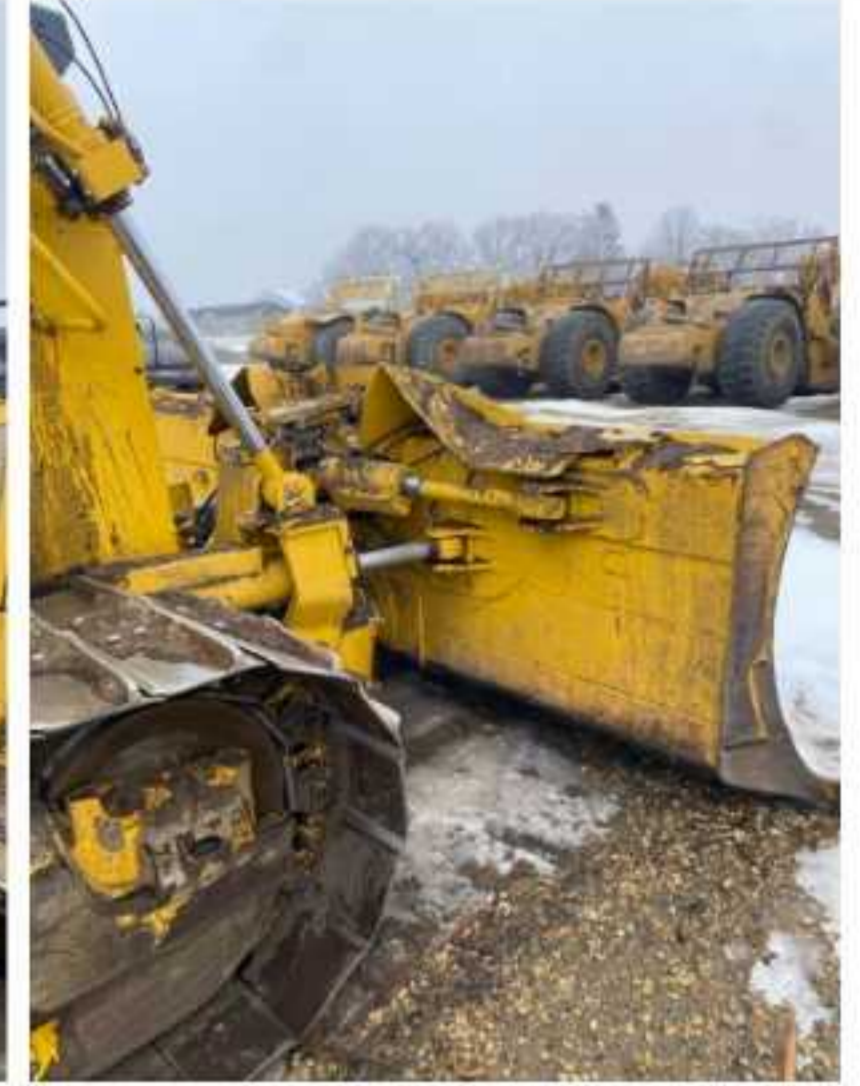
**Coupler Photos**

**Hard Bar Photos**

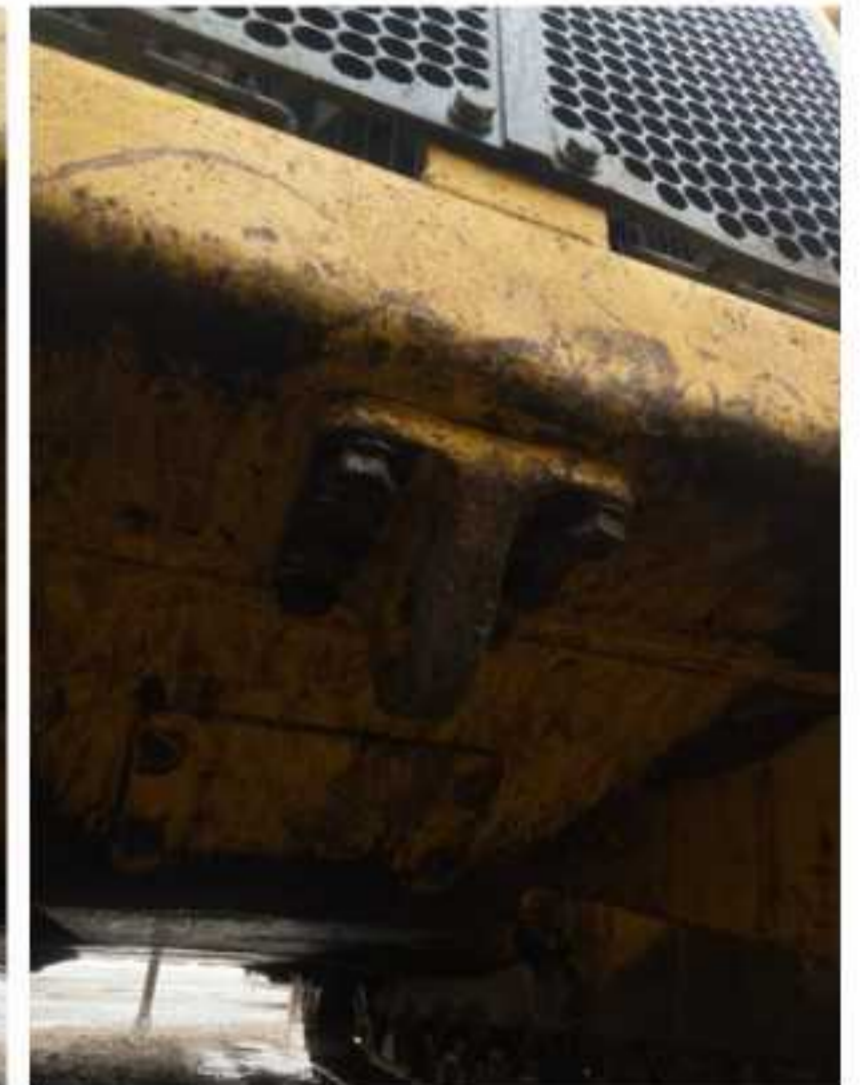
**Close-up Exterior Photos**







**Chassis Photos**



## Undercarriage Condition

**Undercarriage Type**

**Front Left Tire - Photos**

Tracks

**Tire Size**

**Tire Brand**

**Front Left Tire - Ratio Remaining**

**Rear Left Tire - Ratio Remaining**

**Front Right Tire - Ratio Remaining**

**Rear Right Tire - Ratio Remaining**

**Wheel and Tire Condition**

**Left Track - Ratio Remaining**

30%

**Right Track - Ratio Remaining**

30%

**Track Condition**

Good condition, wear consistent with hours

**Pad Width Instructions**

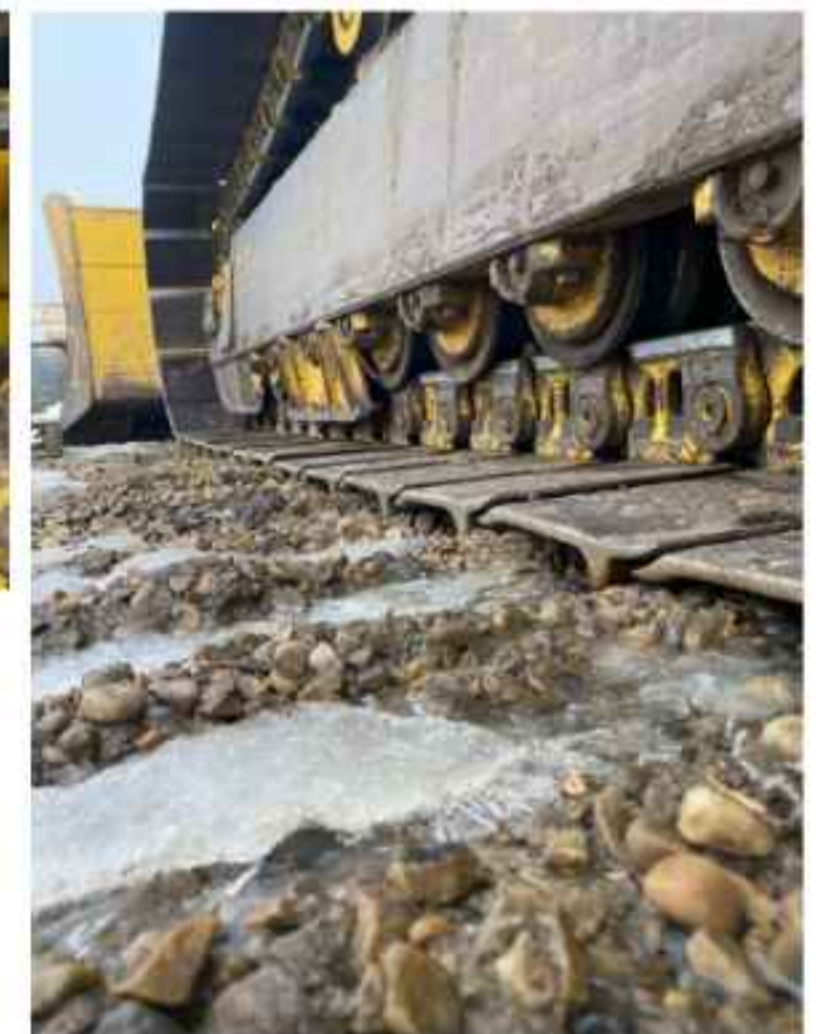
Take photo of tape measure on pad/grousers

**Rear Left Tire - Photos**

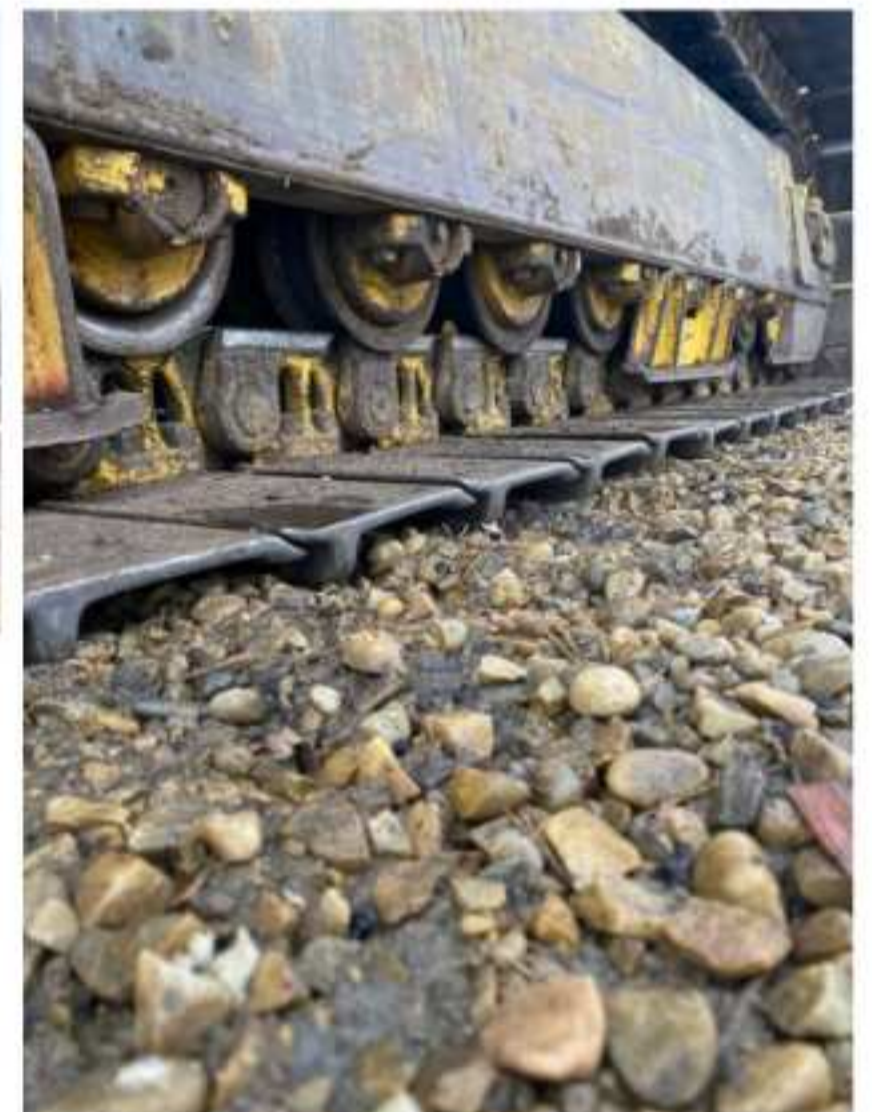
**Front Right Tire - Photos**

**Rear Right Tire - Photos**

**Left Track - Photos**



**Right Track - Photos**



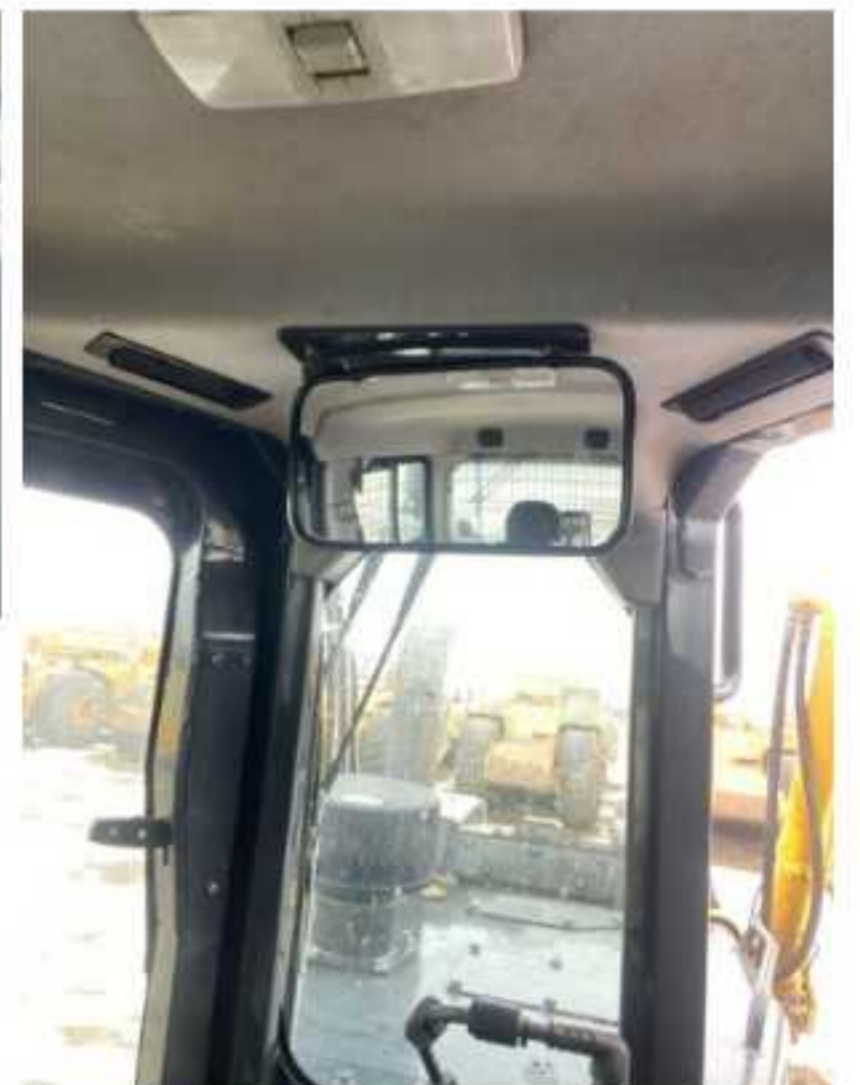
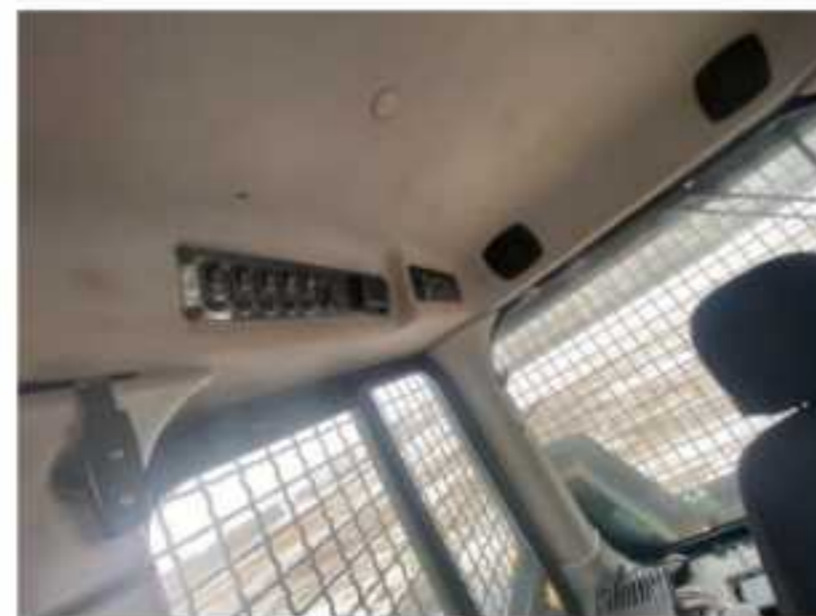
**Pad Width Photo**





## Interior Condition

Interior Condition



## Engine Condition

### Engine Info

Gather general engine information if available (i.e., Make, Model, Cylinders, type, Horsepower).

### Emissions Tier

### Engine Serial Number

### Unusual Noises (Upon Start-up, Idle, Shutdown)

### Engine Exhaust Color

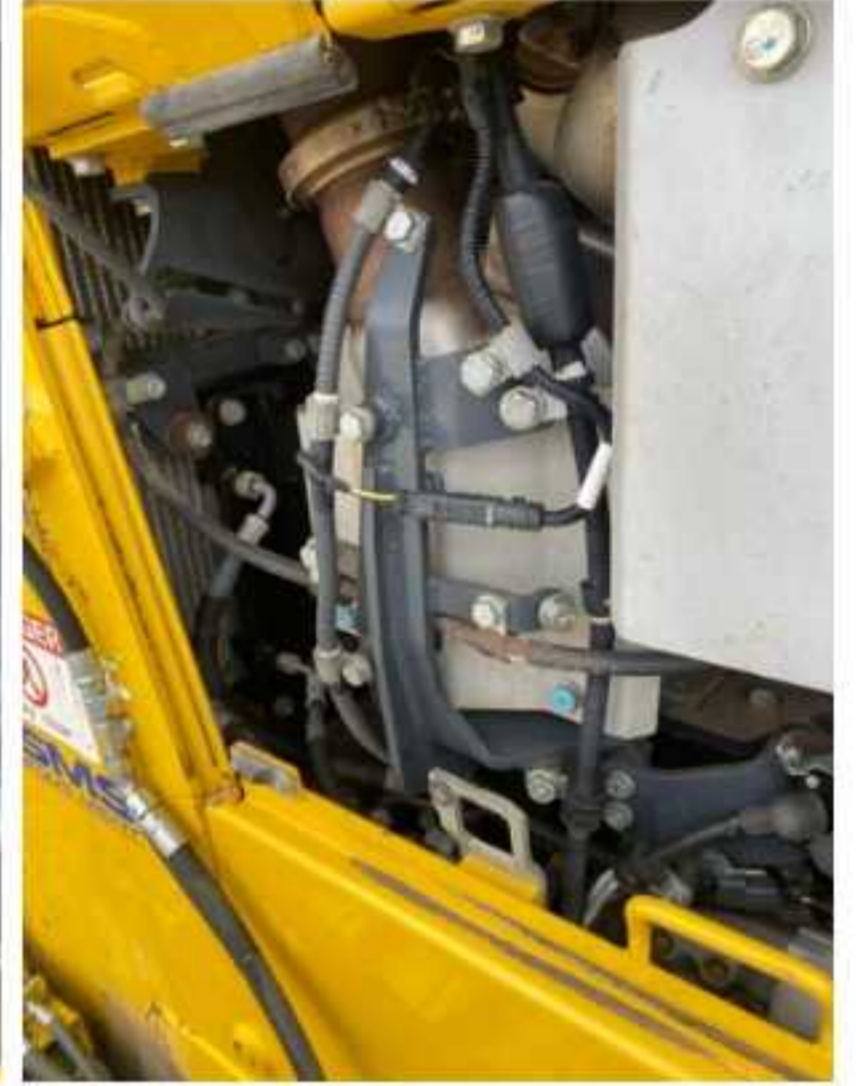
### Engine Type (Make, Model, Cylinders, HP)

### Blow-by (Visual Observation Check)

### Engine Smoke (Upon Start-up, Idle, Shutdown)

### Engine Compartment Photos





**Active Engine Codes**  
**A/C Compressor**  
**Engine Data Plate**



**EPA Label**



## Hydraulic System

**Hydraulic Pumps / Motors Condition**

**Hydraulic Lines/Fittings Condition**

**Hydraulic Cylinders Condition**

Unable to test

**Hydraulic Cylinder Photos**



**Hydraulic System Photos**

**Hydraulic Leaks Photos**

## Drivetrain

**Hydrostatic Transmission?**

Yes

**Drivetrain Photos**

**2 Speed?**

Yes

**Drive**

**Transmission Condition**

Unable to test

**Axle Condition**

Unable to test

**Parking Brake Function**

Unable to test



## Function Check

**Hydraulic Operation**

1

**Service Brakes Operation**

1

**Electronics Operation**

1

**Forward / Reverse**

1

**Attachment Operation**

1

**Park Brake Operation**

1

## Attachments

**Attachment Type**

Ripper

**Attachment Make**

Komatsu

**Attachment Size / Specs**

Three shank

**Attachment Serial Number**

2093

**Attachment Photos**



**Attachment Serial Number Photo**



Attachment Width Photo

