

General Equipment Info

Year

2023

Make

Komatsu

Model

D71PXI-24

Hours

1,100

Serial Number

KMT0D137VNA071125

Machine Options

Cab, Heat, A/C, 6-Way Blade, Ripper

Address

(52.7828169, -112.7767845)

City

Edburg

Province/State

AB

Inspector Name

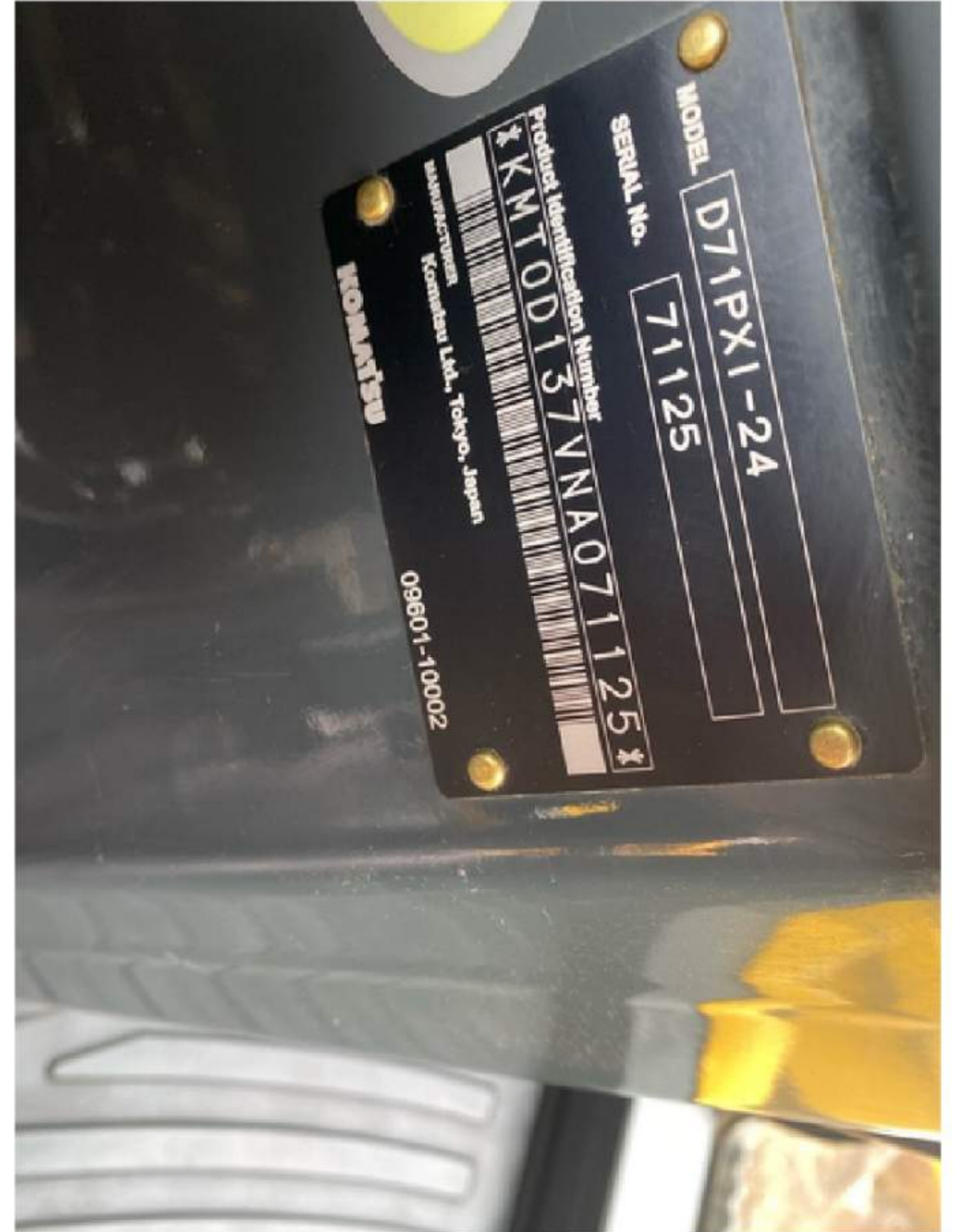
Adam Dow

Date of Inspection

03-13-2024

Hour Meter - Idle Hours

Serial Number Plate

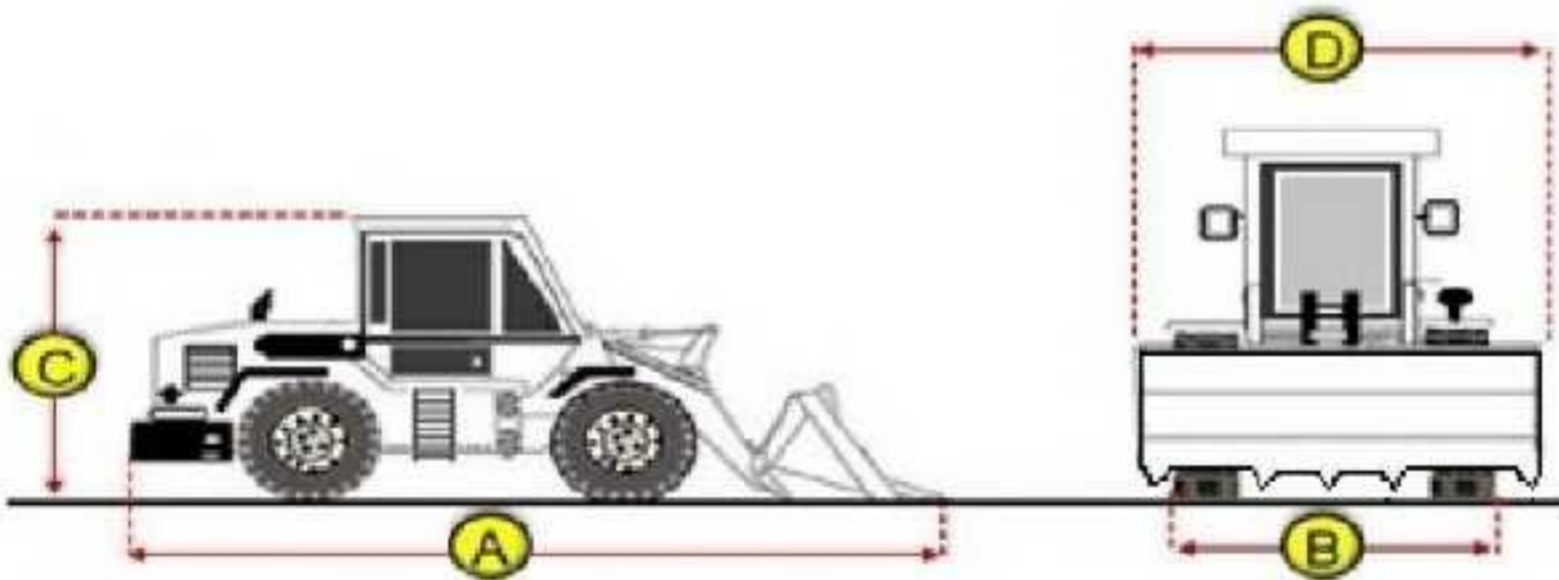


Hour Meter - SMU Hours



Dimensions

Measurement Guide



A. Length (ft and inches)

23' 6"

B. Width (ft and inches)

11' 10"

C. Height (ft and inches)

11' 7"

D. Shipping Width (ft and inches)

13' 2"

Operational Weight (lbs)

Exterior Condition

Coupler Style

Exterior Walkaround Photos

Coupler Brand

Coupler Width (Between bucket ears)

Stick Width (Between bucket ears)

Pin Size

Center to Center of Bucket Pins

Excavator Boom Length

Loader Bucket Pin Height

Width Between Bucket Ears

Top Pin Size

Bottom Pin Size

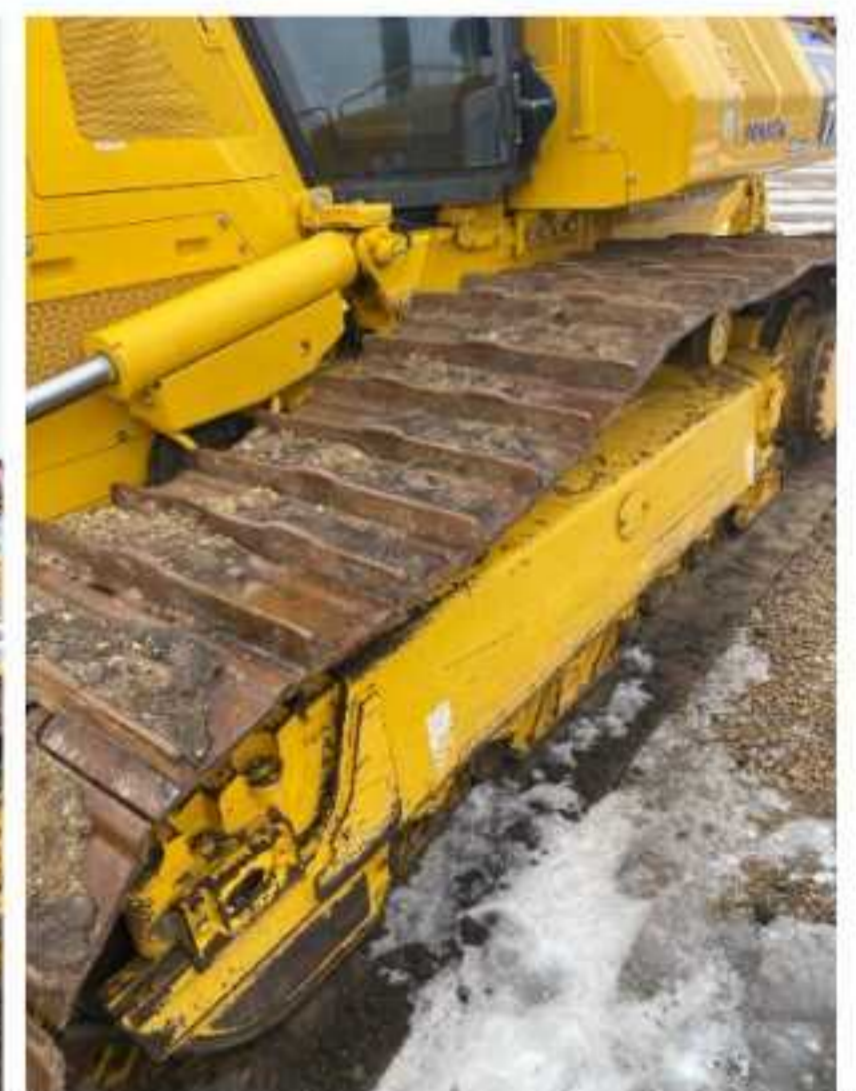
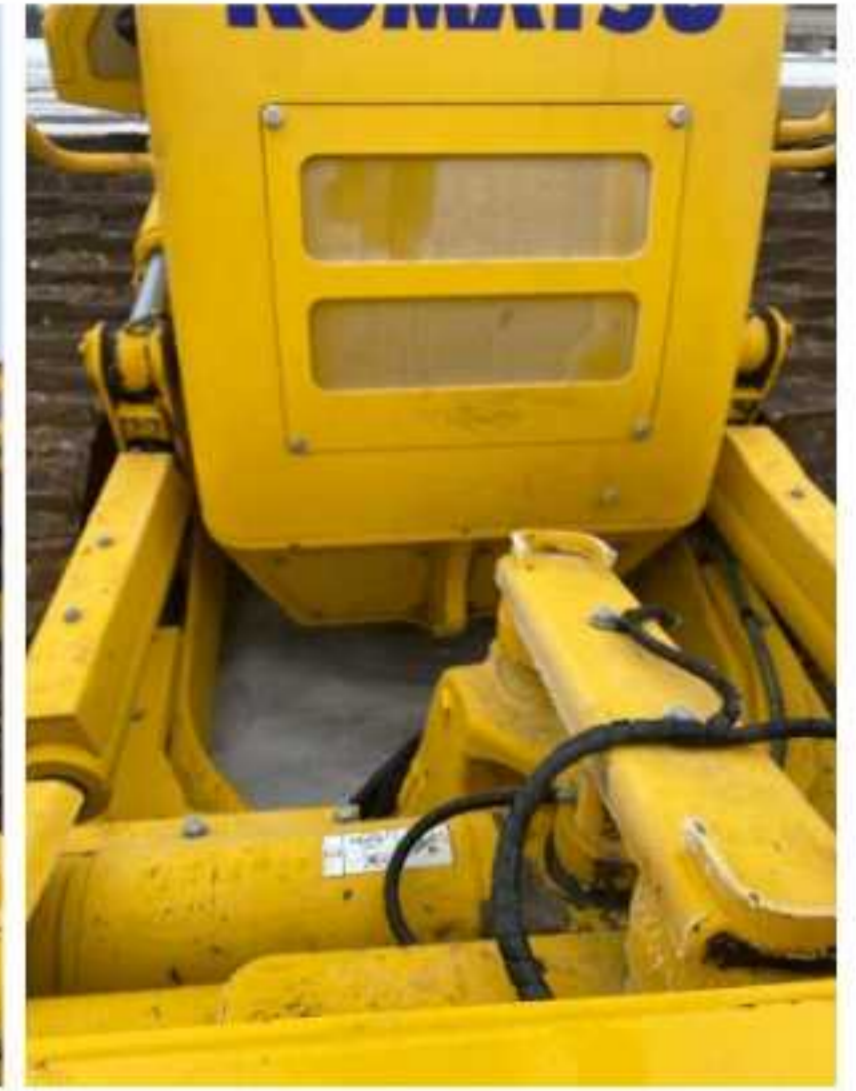
Center to Center of Coupler Pins

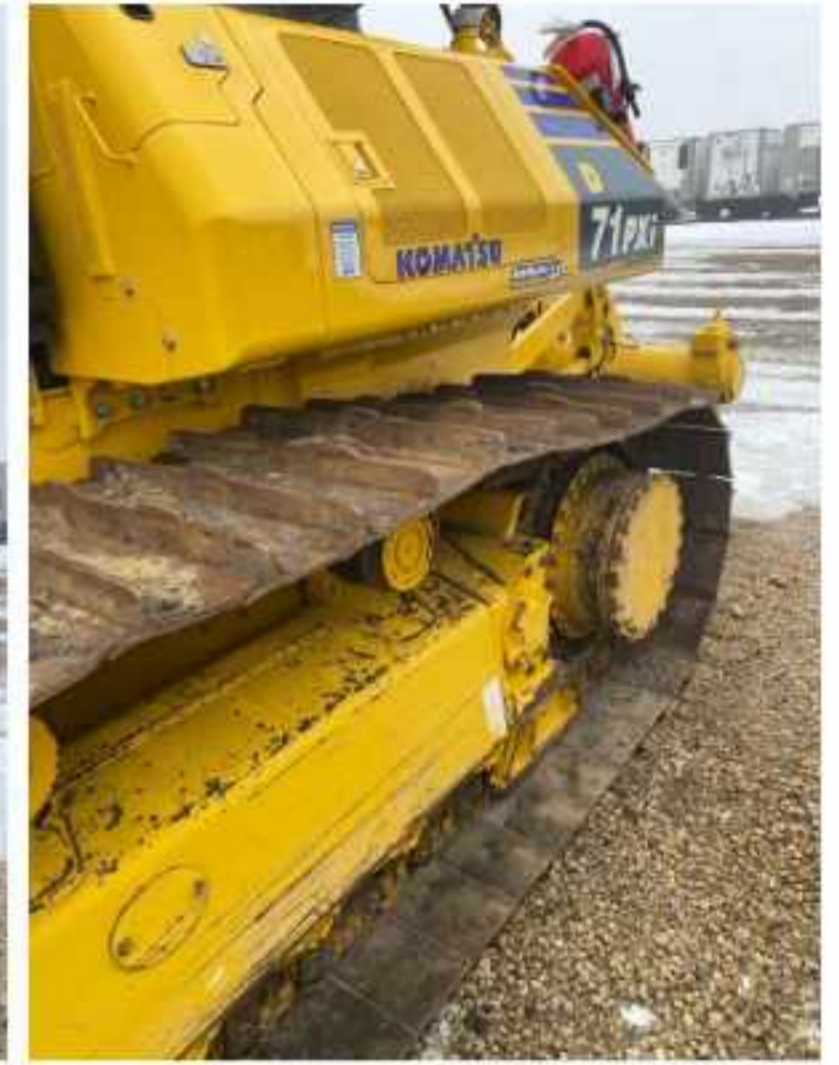


Coupler Photos

Hard Bar Photos

Close-up Exterior Photos







Chassis Photos



Undercarriage Condition

Undercarriage Type

Front Left Tire - Photos

Tracks
Tire Size

Tire Brand

Front Left Tire - Ratio Remaining

Rear Left Tire - Ratio Remaining

Front Right Tire - Ratio Remaining

Rear Right Tire - Ratio Remaining

Wheel and Tire Condition

Left Track - Ratio Remaining

50%

Right Track - Ratio Remaining

50%

Track Condition

Good condition, wear consistent with hours

Pad Width Instructions

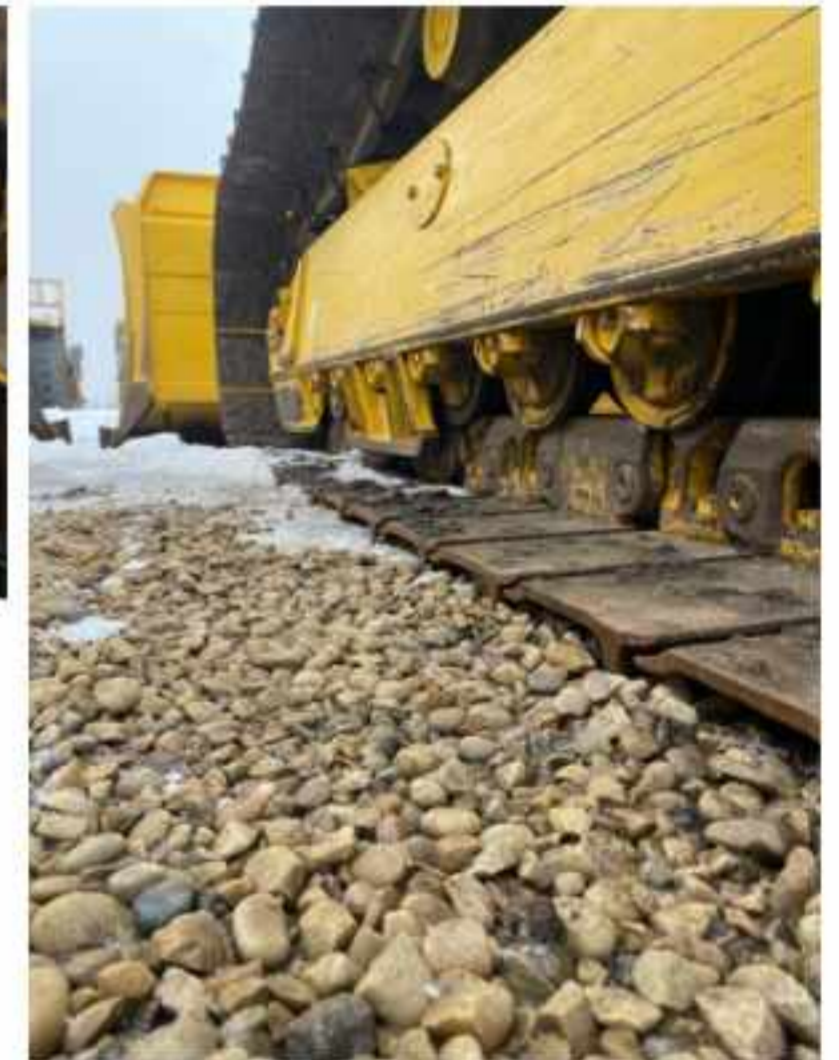
Take photo of tape measure on pad/grousers

Rear Left Tire - Photos

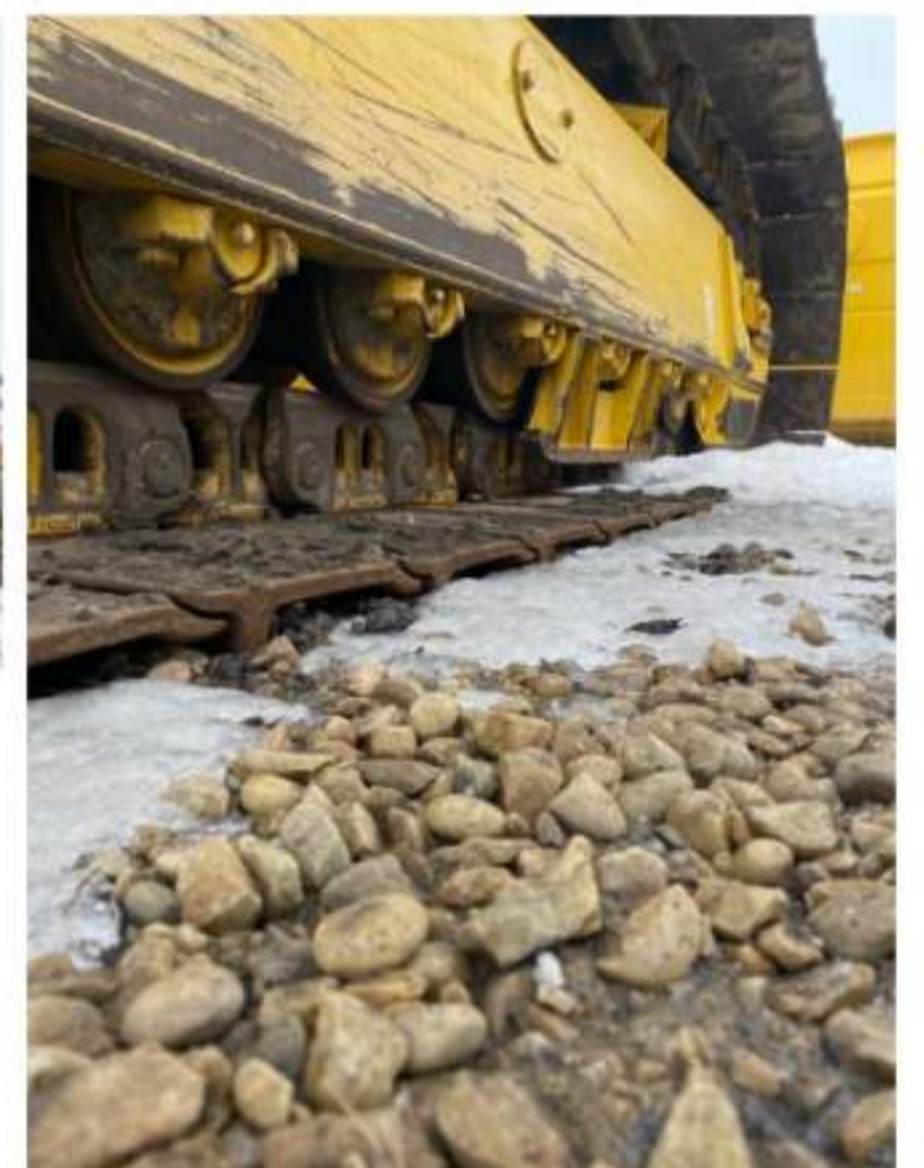
Front Right Tire - Photos

Rear Right Tire - Photos

Left Track - Photos



Right Track - Photos

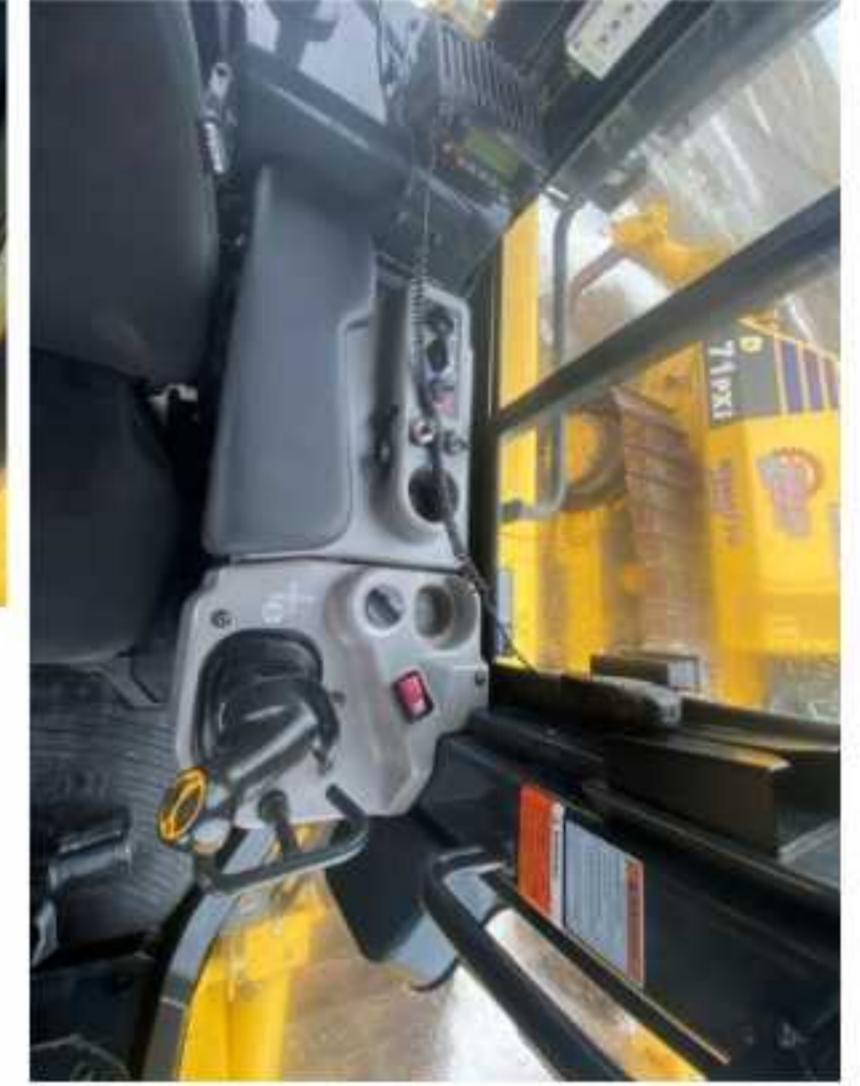


Pad Width Photo



Interior Condition

Interior Condition



Engine Condition

Engine Info

Gather general engine information if available (i.e., Make, Model, Cylinders, type, Horsepower).

Emissions Tier

Engine Compartment Photos



Hydraulic System

Hydraulic Pumps / Motors Condition

Unable to test

Hydraulic Lines/Fittings Condition

Unable to test

Hydraulic Cylinders Condition

Unable to test

Hydraulic Cylinder Photos



Hydraulic System Photos

Hydraulic Leaks Photos

Drivetrain

Hydrostatic Transmission?

2 Speed?

Drive

Transmission Condition

Axle Condition

Parking Brake Function

Drivetrain Photos

Function Check

Hydraulic Operation

1

Service Brakes Operation

1

Electronics Operation

1

Forward / Reverse

1

Attachment Operation

1

Park Brake Operation

1

Attachments

Attachment Type

Ripper

Attachment Make

Komatsu

Attachment Size / Specs

Three shank

Attachment Serial Number

71100

Attachment Photos





Attachment Serial Number Photo



Attachment Width Photo

