

## General Equipment Info

**Year**

2022

**Make**

Komatsu

**Model**

D71PXI-24

**Hours**

3,000

**Serial Number**

KMT0D137JMA070472

**Machine Options**

Cab, Heat, A/C, 6-Way Blade, Ripper

**Address**

(52.7828169, -112.7767845)

**City**

Ednurg

**Province/State**

AB

**Inspector Name**

Adam Dow

**Date of Inspection**

03-13-2024

**Hour Meter - Idle Hours**

**Serial Number Plate**



**Hour Meter - SMU Hours**



## Dimensions

**Measurement Guide**

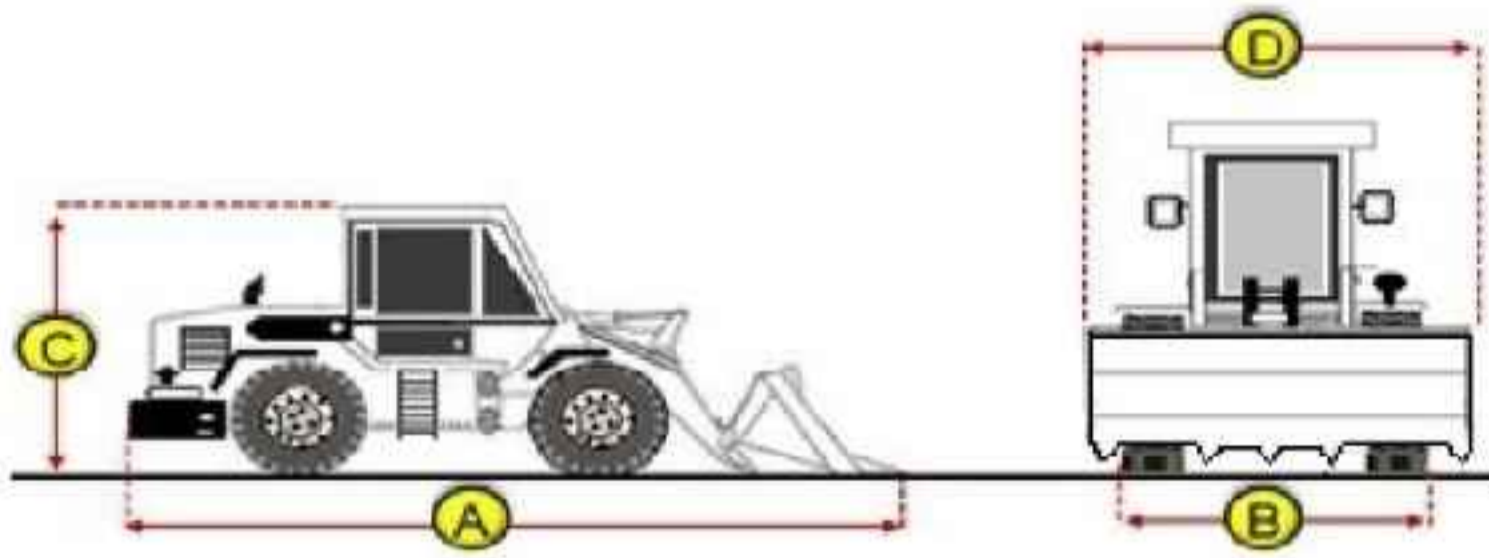
**A. Length (ft and inches)**

23' 6"

**B. Width (ft and inches)**

11' 10"





**C. Height (ft and inches)**

11' 7"

**D. Shipping Width (ft and inches)**

13' 2"

**Operational Weight (lbs)**

## Exterior Condition

**Coupler Style**

**Coupler Brand**

**Coupler Width (Between bucket ears)**

**Stick Width (Between bucket ears)**

**Pin Size**

**Center to Center of Bucket Pins**

**Excavator Boom Length**

**Loader Bucket Pin Height**

**Width Between Bucket Ears**

**Top Pin Size**

**Bottom Pin Size**

**Center to Center of Coupler Pins**

## Exterior Walkaround Photos



**Coupler Photos**

**Hard Bar Photos**



Close-up Exterior Photos







**Chassis Photos**





## Undercarriage Condition

### Undercarriage Type

Tracks

### Tire Size

### Tire Brand

### Front Left Tire - Ratio Remaining

### Rear Left Tire - Ratio Remaining

### Front Right Tire - Ratio Remaining

### Rear Right Tire - Ratio Remaining

### Wheel and Tire Condition

### Left Track - Ratio Remaining

50%

### Right Track - Ratio Remaining

50%

### Track Condition

### Pad Width Instructions

Take photo of tape measure on pad/grousers

### Front Left Tire - Photos

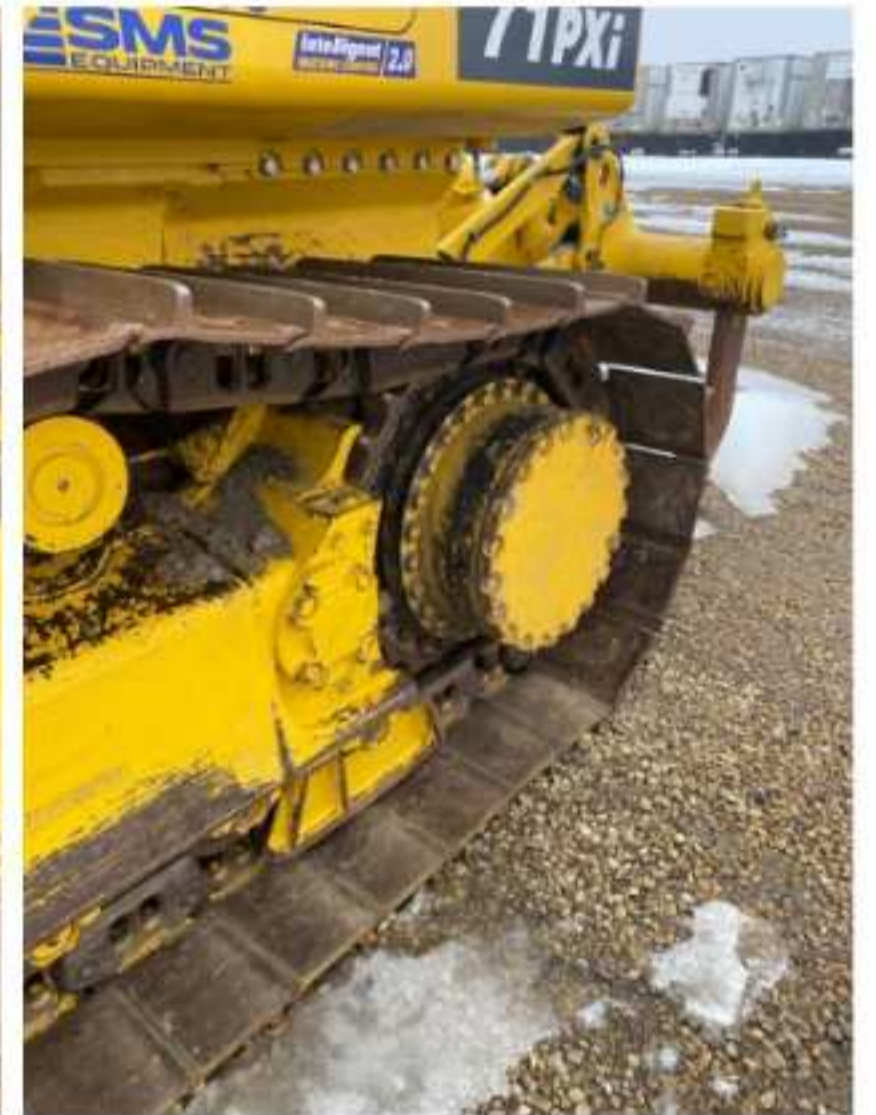
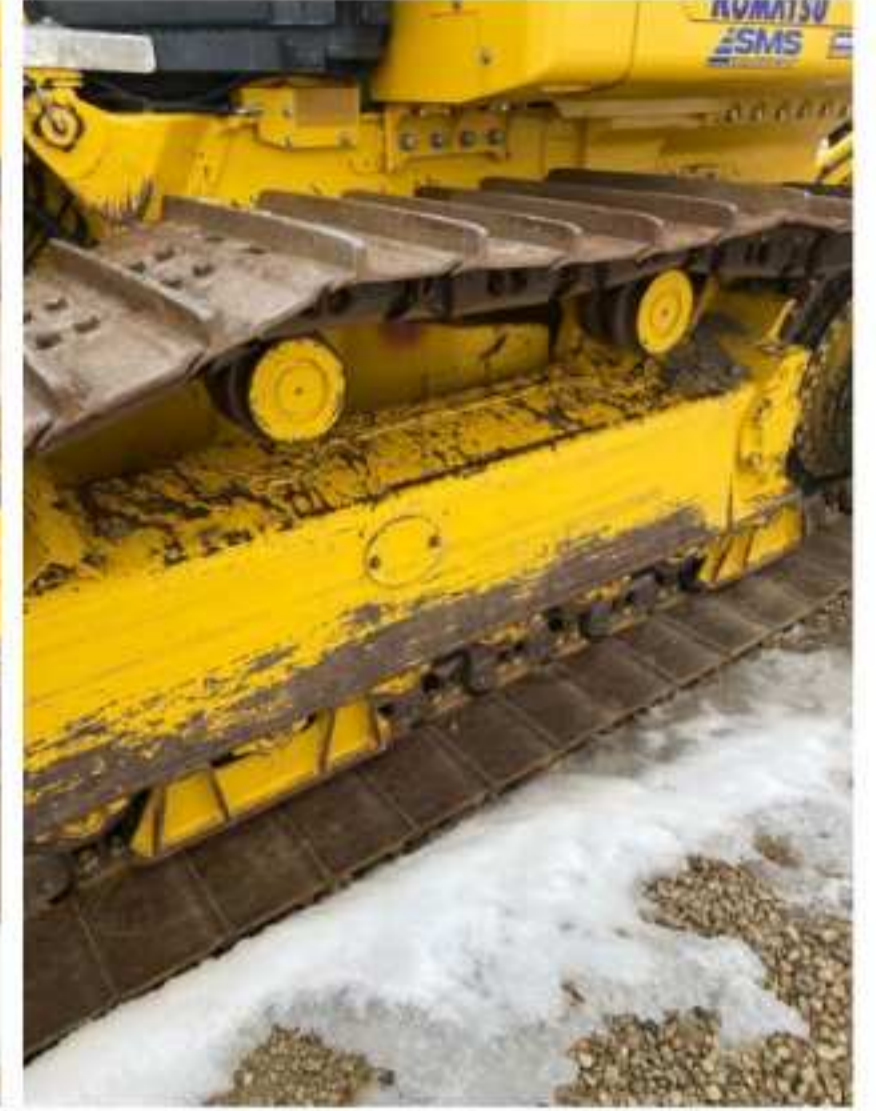
### Rear Left Tire - Photos

### Front Right Tire - Photos

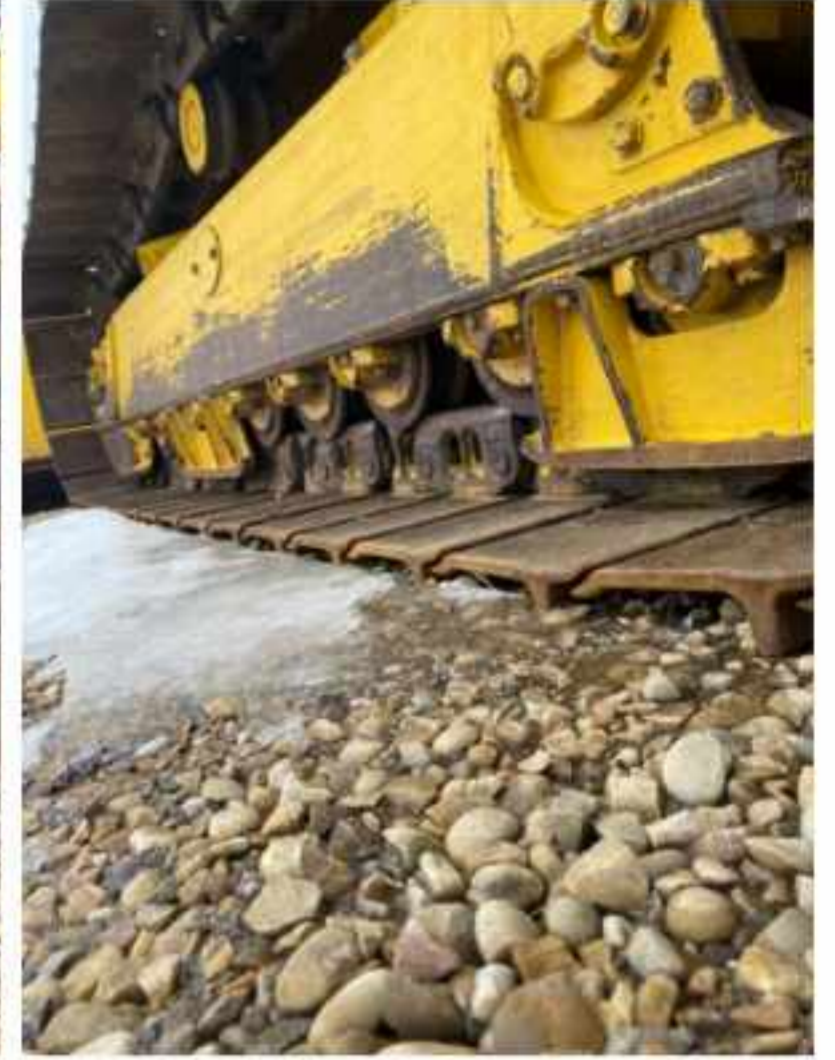
### Rear Right Tire - Photos

### Left Track - Photos









**Right Track - Photos**







**Pad Width Photo**

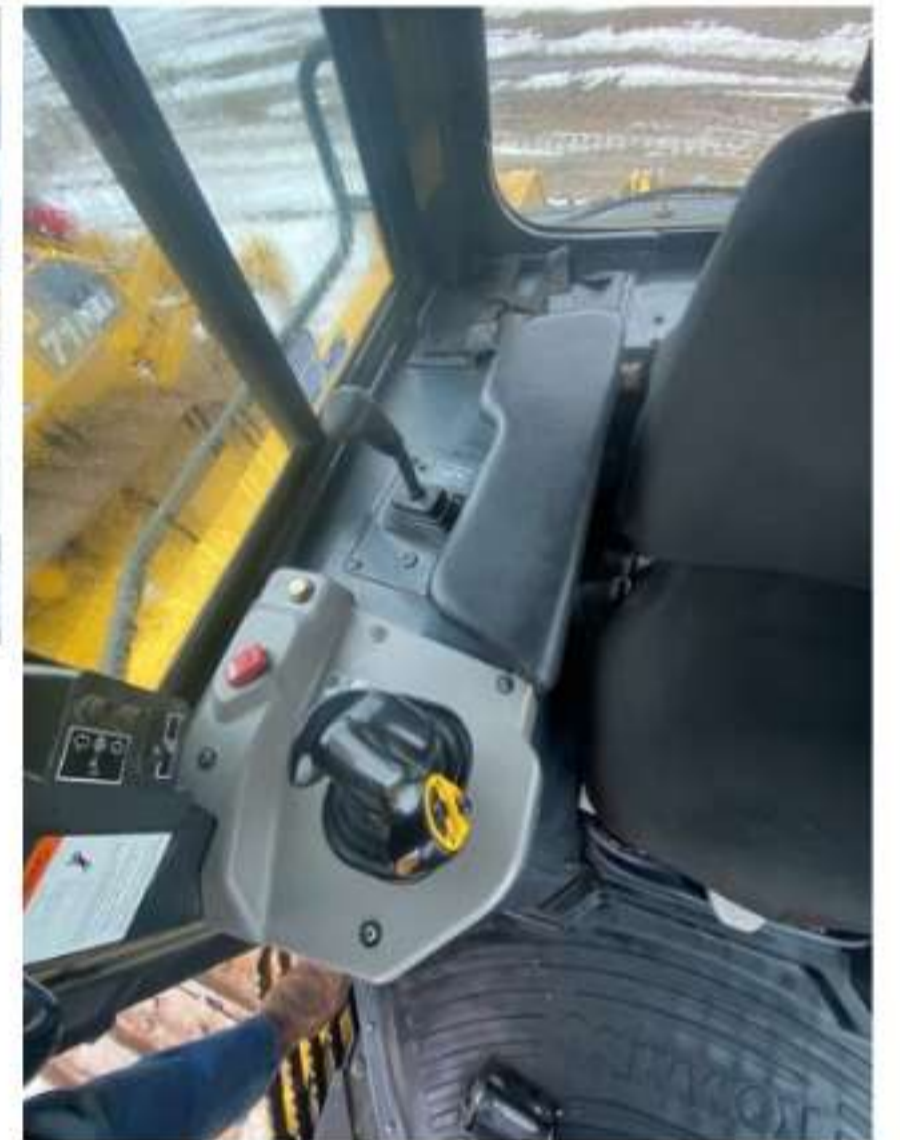




## Interior Condition

Interior Condition







## Engine Condition

### Engine Info

Gather general engine information if available (i.e., Make, Model, Cylinders, type, Horsepower).

### Emissions Tier

### Engine Serial Number

### Unusual Noises (Upon Start-up, Idle, Shutdown)

### Engine Exhaust Color

### Engine Type (Make, Model, Cylinders, HP)

### Blow-by (Visual Observation Check)

### Engine Smoke (Upon Start-up, Idle, Shutdown)

### Engine Compartment Photos



### Active Engine Codes

### A/C Compressor

### Engine Data Plate





**EPA Label**



## Hydraulic System

### Hydraulic Pumps / Motors Condition

### Hydraulic Lines/Fittings Condition

Unable to test

### Hydraulic Cylinders Condition

Unable to test

### Hydraulic Cylinder Photos





Hydraulic System Photos

Hydraulic Leaks Photos

## Drivetrain

**Hydrostatic Transmission?**

Yes

**2 Speed?**

Yes

**Drive**

**Transmission Condition**

Unable to test

**Axle Condition**

Unable to test

**Parking Brake Function**

Unable to test

**Drivetrain Photos**





## Function Check

**Hydraulic Operation**

1

**Service Brakes Operation**

1

**Electronics Operation**

1

**Forward / Reverse**

1

**Attachment Operation**

1

**Park Brake Operation**

1

## Attachments

**Attachment Type**

Ripper

**Attachment Make**

Komatsu

**Attachment Size / Specs**

Three shank

**Attachment Serial Number**

70472

**Attachment Photos**



**Attachment Serial Number Photo**





Attachment Width Photo



