

## General Equipment Info

**Year**

2006

**Make**

CAT

**Model**

D7R XR II

**Hours**

13,694

**Serial Number**

7ZR22838

**Machine Options**

Cab, Heat, A/C, Ripper

**Address**

**City**

Arcola

**Province/State**

Sk

**Inspector Name**

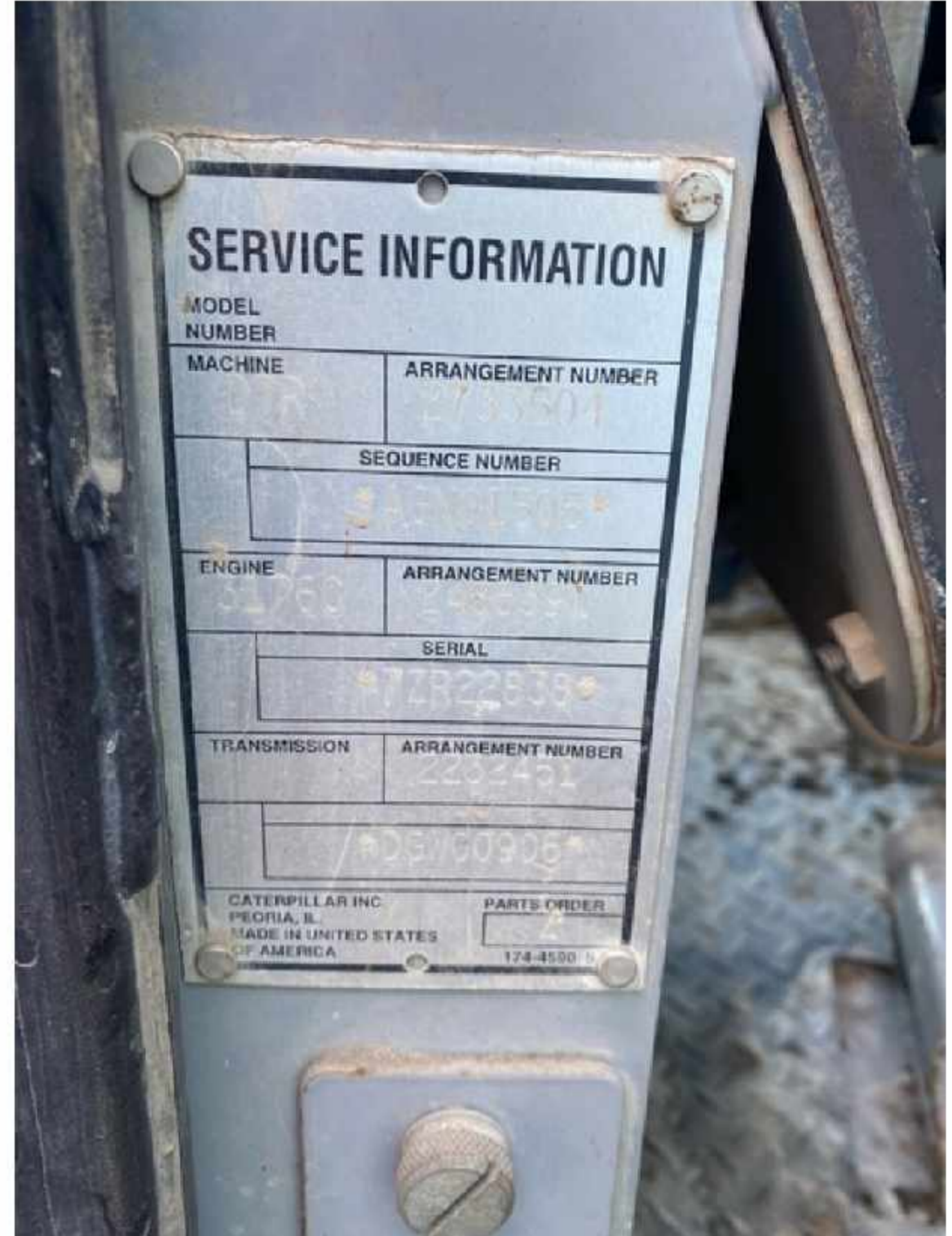
Adam Dow

**Date of Inspection**

03-26-2024

**Hour Meter - Idle Hours**

**Serial Number Plate**

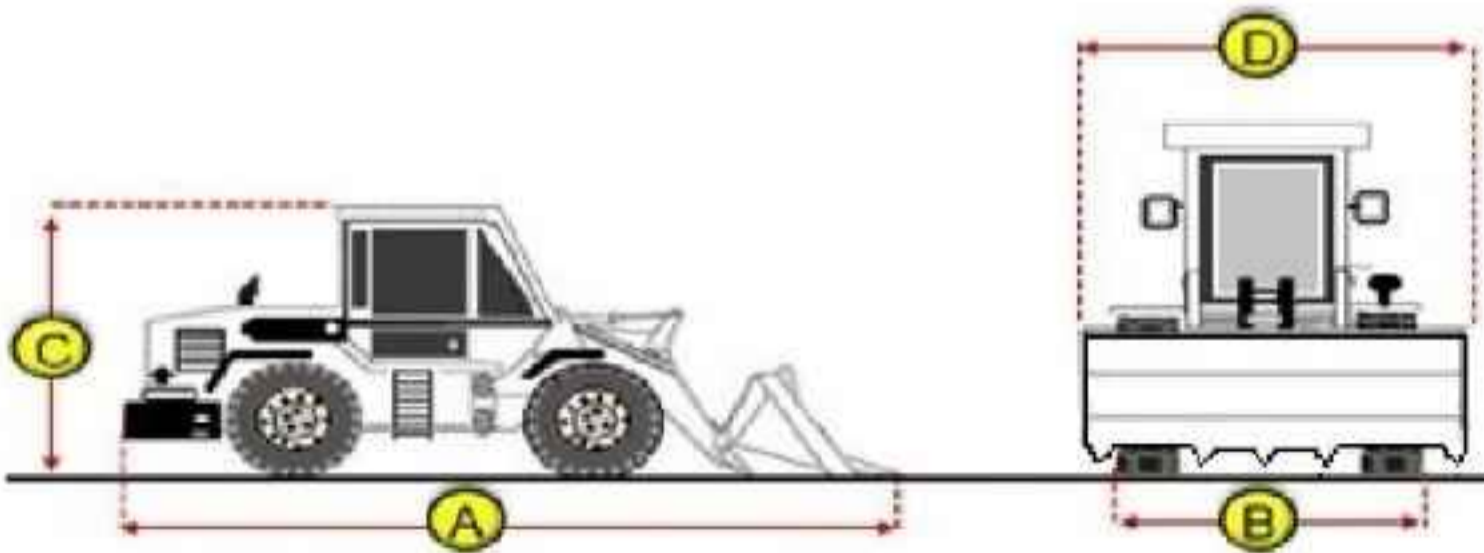


**Hour Meter - SMU Hours**



## Dimensions

### Measurement Guide



A. Length (ft and inches)

B. Width (ft and inches)

C. Height (ft and inches)

D. Shipping Width (ft and inches)

Operational Weight (lbs)

## Exterior Condition

### Coupler Style

### Exterior Walkaround Photos

**Coupler Brand**

**Coupler Width (Between bucket ears)**

**Stick Width (Between bucket ears)**

**Pin Size**

**Center to Center of Bucket Pins**

**Excavator Boom Length**

**Loader Bucket Pin Height**

**Width Between Bucket Ears**

**Top Pin Size**

**Bottom Pin Size**

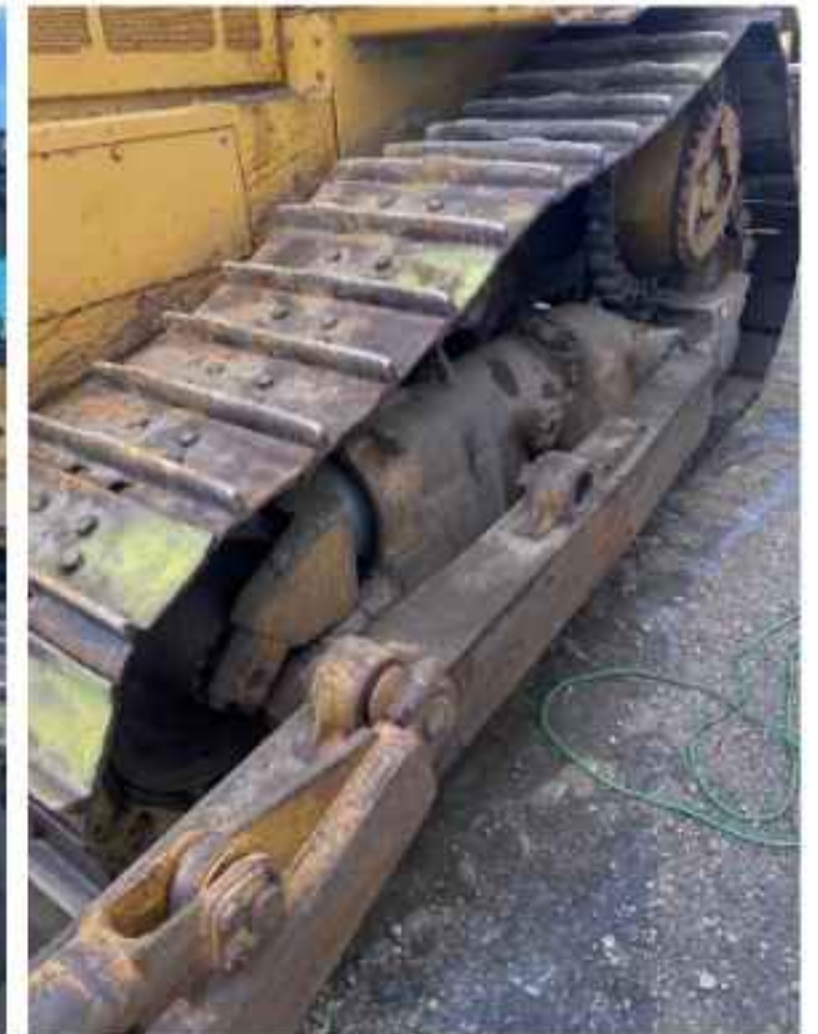
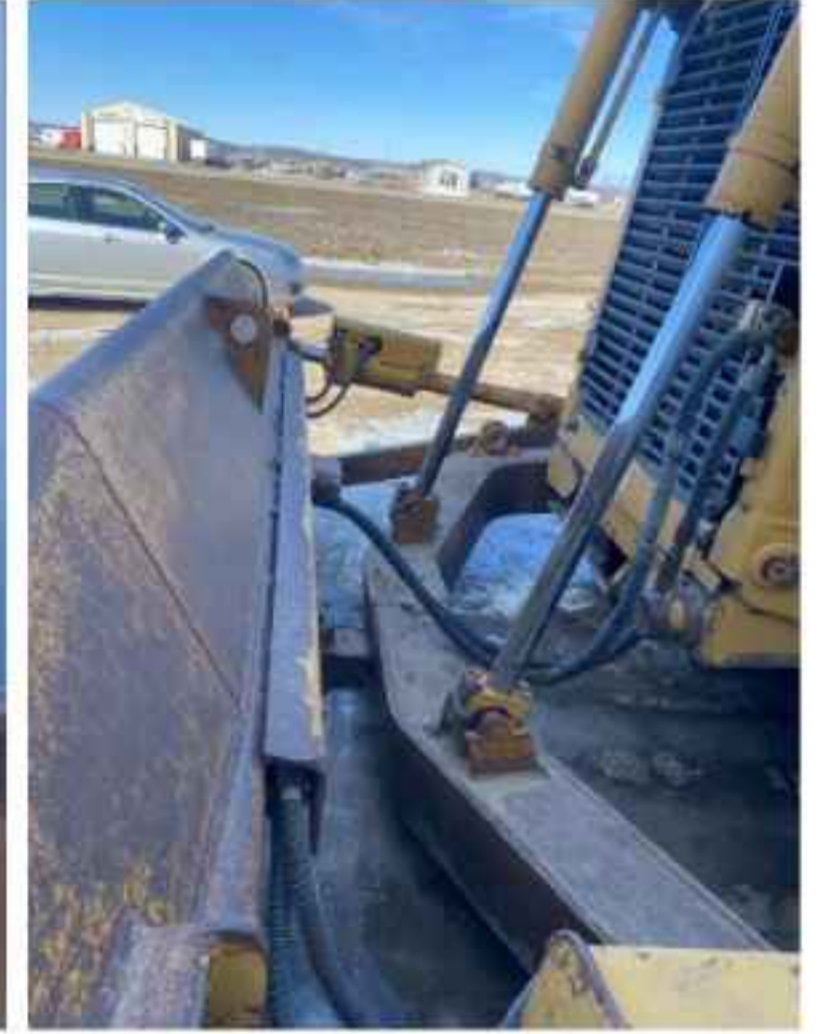
**Center to Center of Coupler Pins**



**Coupler Photos**

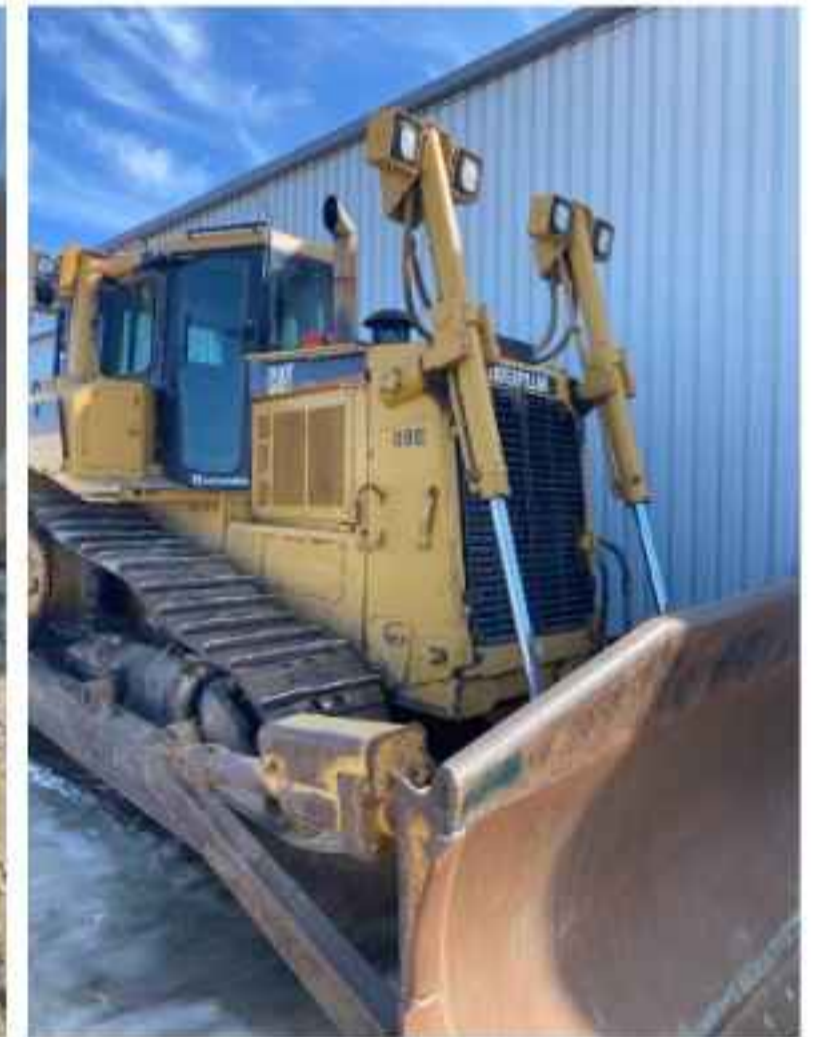
**Hard Bar Photos**

**Close-up Exterior Photos**









**Chassis Photos**



## Undercarriage Condition

**Undercarriage Type**

**Front Left Tire - Photos**

Tracks  
**Tire Size**

**Tire Brand**

**Front Left Tire - Ratio Remaining**

**Rear Left Tire - Ratio Remaining**

**Front Right Tire - Ratio Remaining**

**Rear Right Tire - Ratio Remaining**

**Wheel and Tire Condition**

**Left Track - Ratio Remaining**

50%

**Right Track - Ratio Remaining**

50%

**Track Condition**

Good condition, wear consistent with hours

**Pad Width Instructions**

Take photo of tape measure on pad/grousers

**Rear Left Tire - Photos**

**Front Right Tire - Photos**

**Rear Right Tire - Photos**

**Left Track - Photos**



**Right Track - Photos**



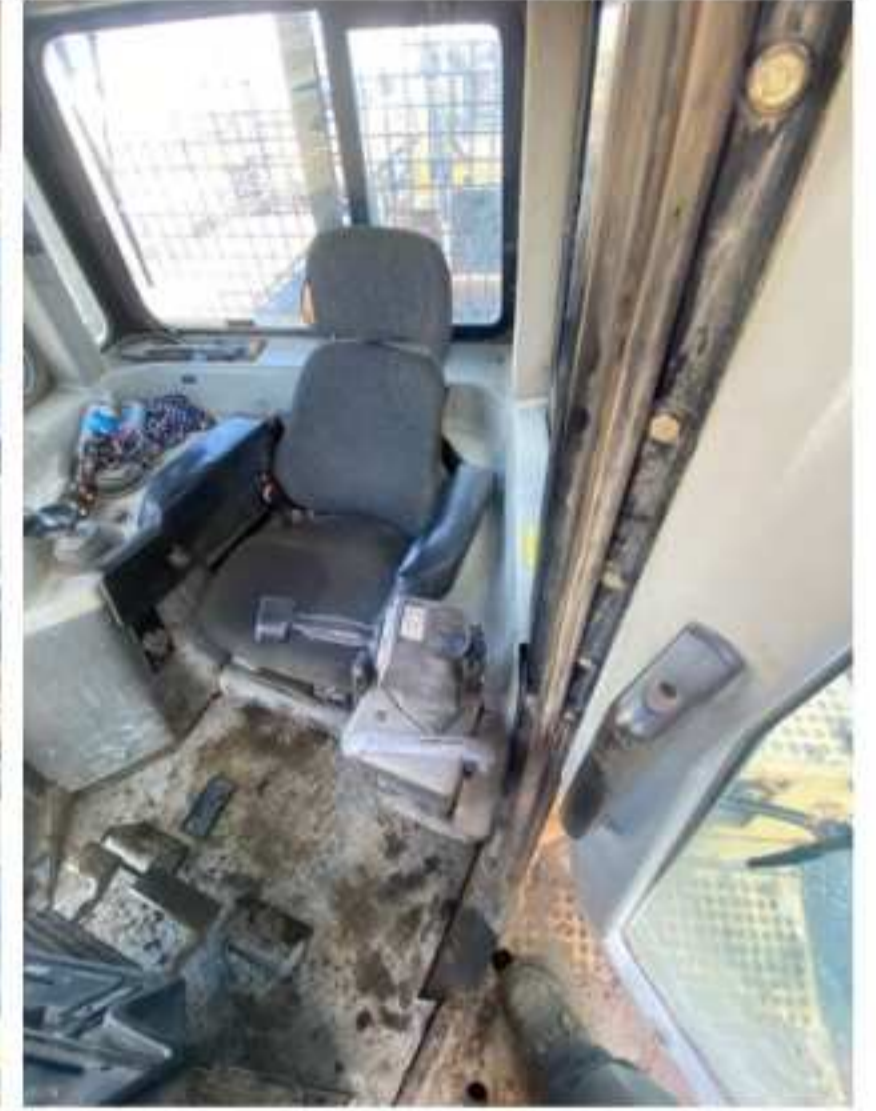


**Pad Width Photo**



## Interior Condition

Interior Condition





## Engine Condition

### Engine Info

Gather general engine information if available (i.e., Make, Model, Cylinders, type, Horsepower).

### Emissions Tier

### Engine Serial Number

### Unusual Noises (Upon Start-up, Idle, Shutdown)

### Engine Exhaust Color

### Engine Type (Make, Model, Cylinders, HP)

### Blow-by (Visual Observation Check)

NA

### Engine Smoke (Upon Start-up, Idle, Shutdown)

### Engine Compartment Photos



**Active Engine Codes**

**A/C Compressor**



**Engine Data Plate**



**EPA Label**



## Hydraulic System

### Hydraulic Pumps / Motors Condition

Unable to test

### Hydraulic Lines/Fittings Condition

Unable to test

### Hydraulic Cylinders Condition

Unable to test

### Hydraulic Cylinder Photos



**Hydraulic System Photos**



**Hydraulic Leaks Photos**



## Drivetrain

**Hydrostatic Transmission?**

Yes

**2 Speed?**

**Drive**

**Transmission Condition**

Unable to test

**Axle Condition**

Unable to test

**Parking Brake Function**

Unable to test

**Drivetrain Photos**





## Function Check

**Hydraulic Operation**

1

**Service Brakes Operation**

1

**Electronics Operation**

1

**Forward / Reverse**

1

**Attachment Operation**

1

**Park Brake Operation**

1

## Attachments

**Attachment Type**

Ripper

**Attachment Photos**

**Attachment Make**

Cat

**Attachment Size / Specs**

Three prong

**Attachment Serial Number**

7TP01023



**Attachment Serial Number Photo**



**Attachment Width Photo**

