

General Equipment Info

Year

Make

John Deere

Model

75g

Hours

3,202

Serial Number

1FF075GXEJJ016603

Machine Options

Cab, Heat, Aux. Hydraulics, SU Blade, Cleanup Bucket, Digging Bucket

Address

City

Aldergrove

Province/State

BC

Inspector Name

Flori

Date of Inspection

04-01-2024

Hour Meter - Idle Hours

Serial Number Plate



Hour Meter - SMU Hours



Dimensions

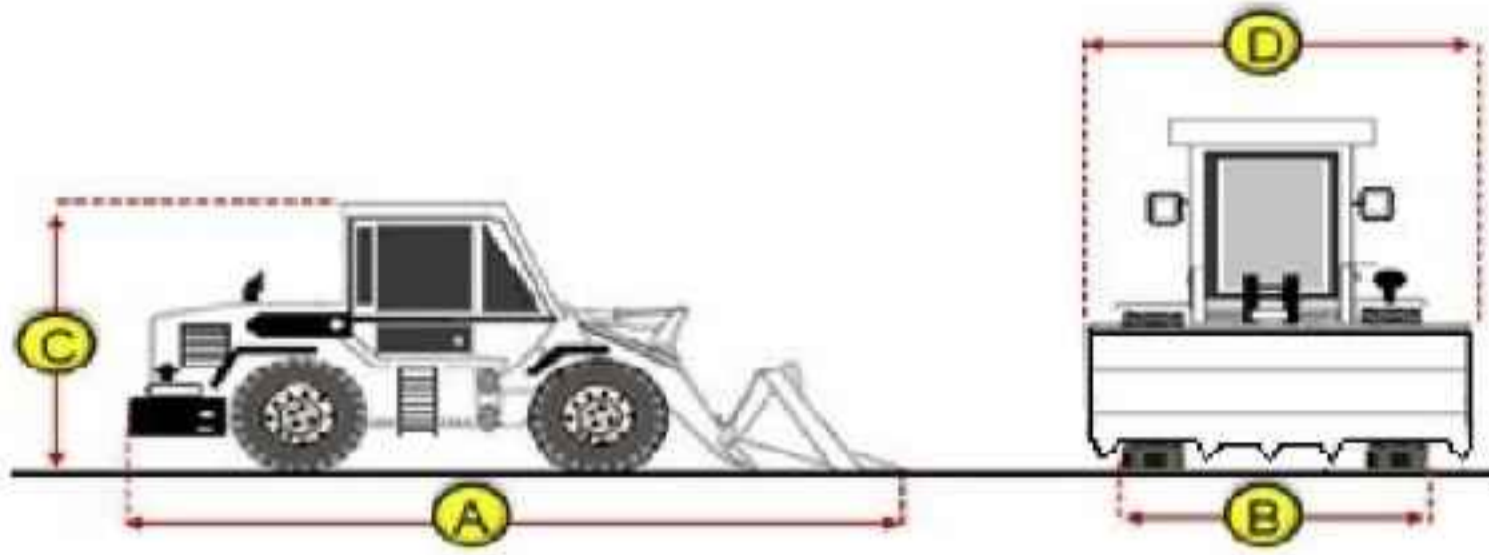
Measurement Guide

A. Length (ft and inches)

13'

B. Width (ft and inches)

7' 8"



C. Height (ft and inches)

10'3"

D. Shipping Width (ft and inches)

7'8"

Operational Weight (lbs)

Exterior Condition

Coupler Style

Wedge Lock

Coupler Brand

Brandt

Coupler Width (Between bucket ears)

10 1/4"

Stick Width (Between bucket ears)

Pin Size

Center to Center of Bucket Pins

Excavator Boom Length

103"

Loader Bucket Pin Height

Width Between Bucket Ears

Top Pin Size

Bottom Pin Size

Center to Center of Coupler Pins

Exterior Walkaround Photos





Coupler Photos



Hard Bar Photos

Close-up Exterior Photos





Chassis Photos



Undercarriage Condition

Undercarriage Type

Tracks

Tire Size

Tire Brand

Front Left Tire - Ratio Remaining

Rear Left Tire - Ratio Remaining

Front Right Tire - Ratio Remaining

Rear Right Tire - Ratio Remaining

Wheel and Tire Condition

Left Track - Ratio Remaining

90%

Right Track - Ratio Remaining

90%

Track Condition

Good condition, low wear

Pad Width Instructions

Take photo of tape measure on pad/grousers

Front Left Tire - Photos

Rear Left Tire - Photos

Front Right Tire - Photos

Rear Right Tire - Photos

Left Track - Photos



Right Track - Photos



Pad Width Photo



Interior Condition

Interior Condition



Engine Condition

Engine Info

Gather general engine information if available (i.e., Make, Model, Cylinders, type, Horsepower).

Emissions Tier

Engine Serial Number

Unusual Noises (Upon Start-up, Idle, Shutdown)

Yes

Engine Exhaust Color

Clear

Engine Type (Make, Model, Cylinders, HP)

Yanmar

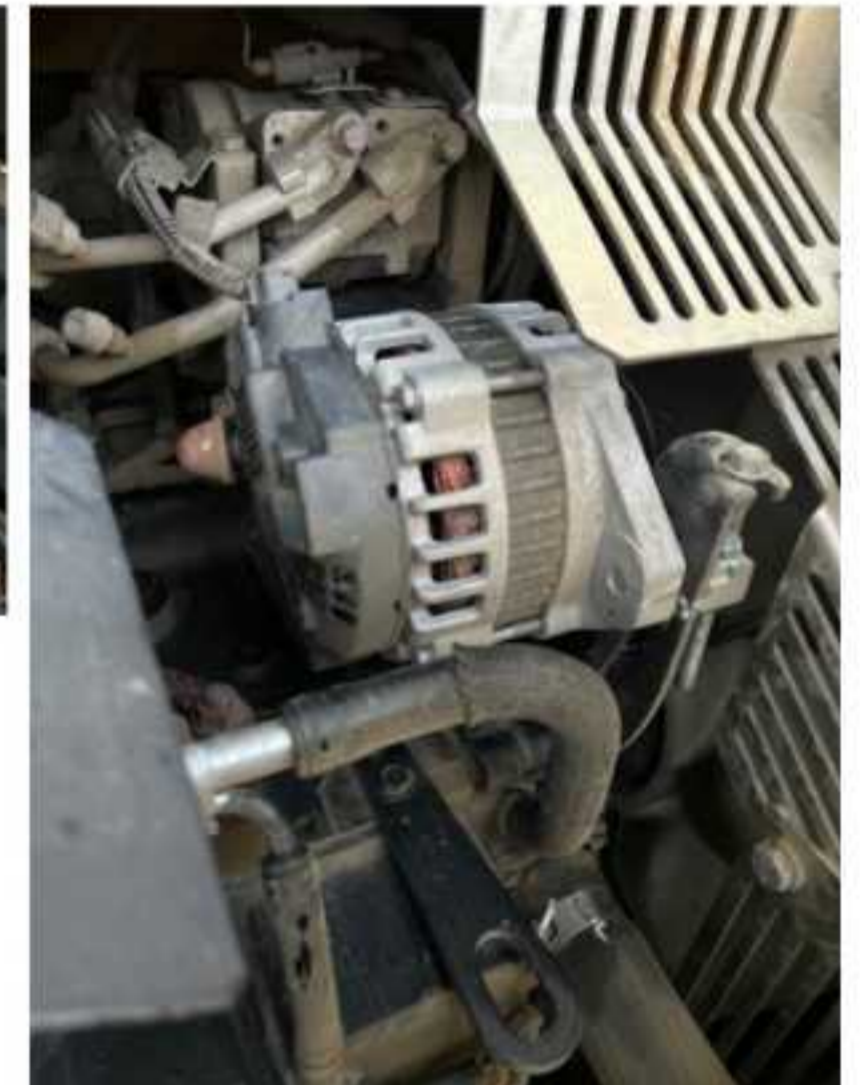
Blow-by (Visual Observation Check)

No

Engine Smoke (Upon Start-up, Idle, Shutdown)

No

Engine Compartment Photos



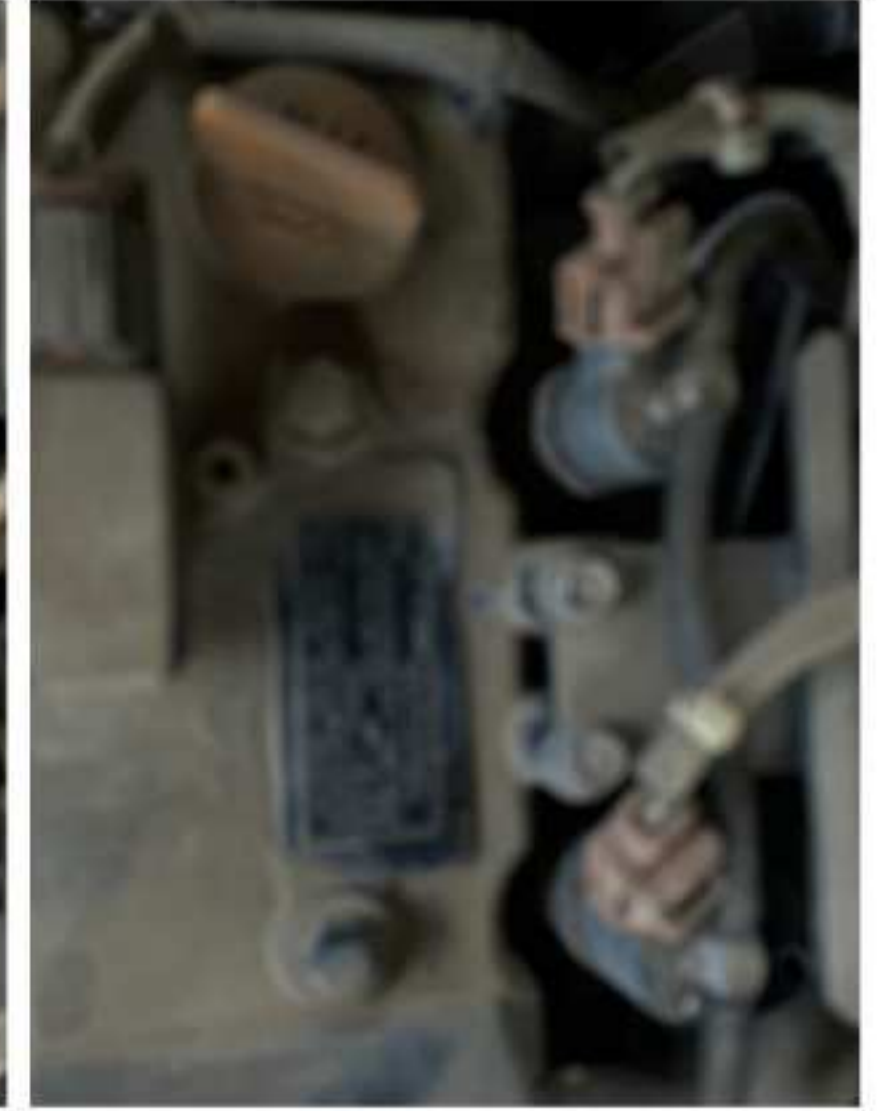
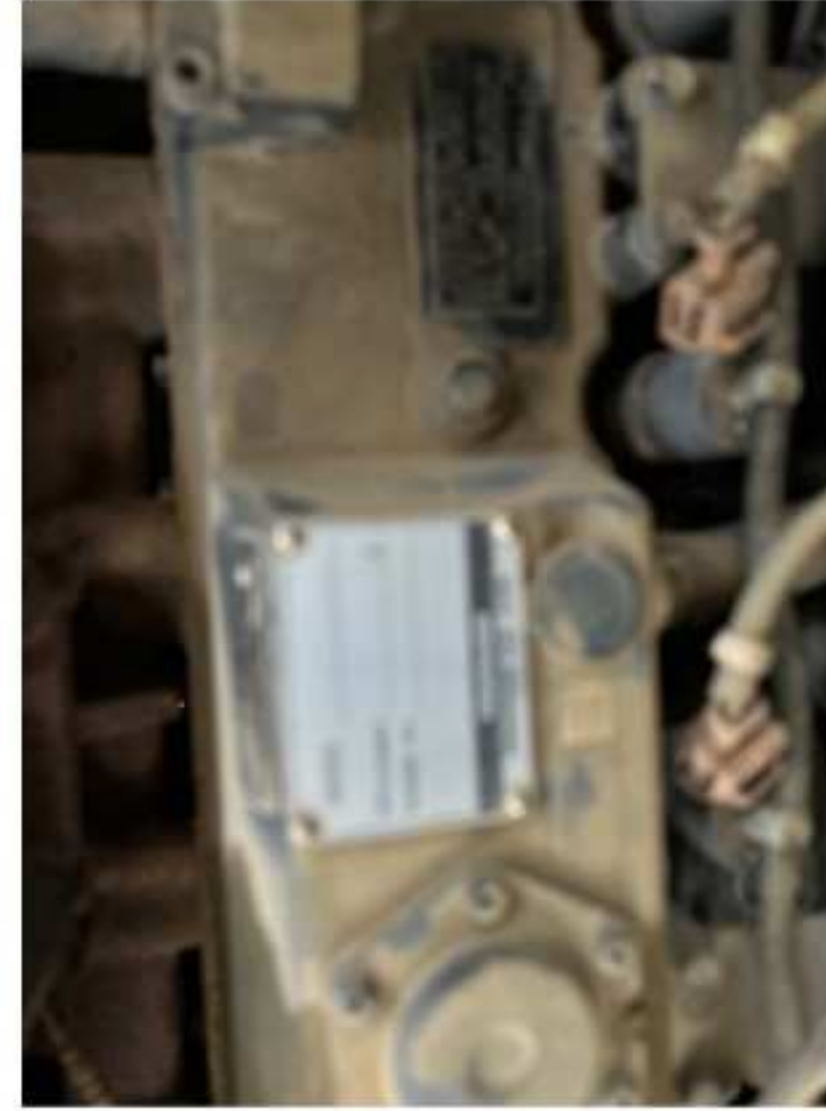
Active Engine Codes

A/C Compressor

Engine Data Plate



EPA Label



Hydraulic System

Hydraulic Pumps / Motors Condition

Hydraulic pumps & motors are dry and in good condition

Hydraulic Lines/Fittings Condition

Hydraulic Lines & Fittings are clean and in good condition

Hydraulic Cylinder Photos

Hydraulic Cylinders Condition

Hydraulic cylinders are clean and in good condition



Hydraulic System Photos





Hydraulic Leaks Photos

Drivetrain

Hydrostatic Transmission?

2 Speed?

Drive

Transmission Condition

Axle Condition

Parking Brake Function

Drivetrain Photos

Function Check

Hydraulic Operation

N/A

Service Brakes Operation

Electronics Operation

N/A

Forward / Reverse

N/A

Attachment Operation

N/A

Park Brake Operation

N/A

Attachments

Attachment Type

Clean out bucket

Attachment Make

Brandt

Attachment Size / Specs

47" wide

Attachment Serial Number

560134

Attachment Photos



Attachment Serial Number Photo



Attachment Width Photo



1

Additional Attachments

Attachment Type

Digging bucket

Attachment Make

Brandt

Attachment Size / Specs

24" wide

Attachment Serial Number

Attachment Photos

Attachment Serial Number Photo

Attachment Width Photo